



Completion of the Medium-Term Four-Year Plan, and looking beyond it

→ More details on the next page.

At the start of FY2017



Fumiko Hayashi
Mayor of Yokohama

Fiscal 2017 is the year for the complete achievement of Yokohama's Medium-Term Four-Year Plan 2014 – 2017. The Plan sets forth initiatives to support Yokohama today and ensure its advancement into the future, in all fields from childraising & education and welfare & medical services to disaster prevention & mitigation, economic stimulation, and urban development. We are reaffirming our commitment to implementing these initiatives, and are going to do our utmost to attain the Plan's targets. We are likewise going to come to firm grips with urgent issues such as the problem of bullying, safety on roads children use to walk to and from school, and poverty in households with children while also executing measures that look beyond the Plan.

The environment surrounding Yokohama is becoming increasingly harsh owing to trends such as rapid population aging and rising needs for infrastructural preservation and upgrading. Our city, however, has the all-around power required to overcome these difficulties. This power resides in the distinctive appeal of our streets without equal in other cities, in our capabilities for urban improvement grounded in the extensive experience we have accumulated so far, and in the talents of each and every citizen and company living, working, and doing business in Yokohama. Our districts are becoming even more vibrant due to attraction of international meetings, incentives, conferences, and events (MICE), and numerous other events that draw on the power of culture, arts, and sports and are brimming with appeal. Meanwhile, we are striving for the solution of problems in areas such as support for childcare and global warming, based on public-private collaboration. We are going to continue making the most of Yokohama's potential as we construct a solid financial foundation and achieve sustained growth.

The answers to all questions are to be found on the very site, and even the thorniest problems can definitely be resolved by mobilizing human capabilities. I am determined to adhere to this conviction and tackle tasks through an all-Yokohama effort again this fiscal year, so Yokohama can make another leap.

Promotion of initiatives to support Yokohama today and spur its advancement into the future

Contact: Policy Division, Policy Bureau
Tel: 045-671-4326 Fax: 045-663-4613

Fiscal 2017 is the terminal year of the Medium-Term Four-Year Plan 2014 – 2017, and consequently the year for its completion. To protect the safety and security of all our citizens and ensure opportunities for a fulfilling life, we must not only attain the Plan targets but also respond to urgent issues such as stronger measures for children living in poverty and prevention of bullying, and take approaches that look beyond the Plan. This page outlines Yokohama's major approaches in fiscal 2017 under three headings: the Medium-Term Four-Year Plan, response to urgent issues, and approaches looking beyond the Plan.

Completion of the Medium-Term Four-Year Plan

Protecting the safety and security of all citizens, and ensuring opportunities for a fulfilling life



Support for children and childrearing

- Continuation of measures to eliminate waiting lists for admission to nursery schools
- Seamless support extending from pregnancy to after birth



Building health

- Promotion of the Yokohama Walking Point program

Targeting 300,000 registered participants



Production site for X-ray generators

Strengthening of growth fields and promotion of SMEs

- Creation of new industries and businesses through innovation
- Financing and management & technical support for small and medium enterprises (SMEs)
- Support for revitalization of traditional business districts



A city for tourism, MICE, and cultural & artistic creation

- The 50th Asian Development Bank Annual Meeting
- The Yokohama Triennale 2017 and Yokohama Paratriennale 2017



Support for activity by senior citizens

- Promotion of model projects for community contribution by active senior citizens

Introducing opportunities for social participation in correspondence with lifestyle



Support for women's activity

- Promotion of women's activity in collaboration with a Yokohama council for promotion of women's activity
- Support for the growth and advancement of businesswomen

Promotion Weeks for shining businesswomen



Yokohama Kohoku Junction

Enhancement of urban functions & the environment

- Construction of the Yokohama Ring Expressway
- Construction of a new city hall building and increase in the vibrancy of the Kannai and Kangai districts
- Approaches to the revival of suburban housing tracts



Playing bocce

Support for living and activity by the disabled

- Preparation of centers in the southern part of the city for sports and cultural activities by the disabled



Medical & welfare services

- Construction of total community care systems based on closer coordination between medical care and nursing care etc.
- Fuller and better nursing prevention & lifestyle support systems



On-site survey beside a cliff

A city resilient to disaster

- Promotion of measures to prevent disasters from earthquakes, such as steps to prevent fire and conflagration on the district level and widening of narrow roads
- Promotion of measures to prevent landslides and flooding

Response to urgent issues



Promotion of measures for children living in poverty

Besides providing close individual support for learning in all wards, Yokohama has initiated approaches to prevent children from dropping out of high school. It also assists various activities to support children and their families by community programs, such as the Children's Cafeteria program.

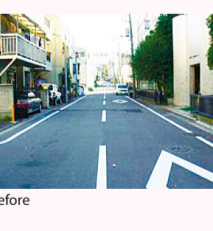


Reinforcement of the system of support for children and students

In addition to appointing four new chief school social workers, Yokohama is appointing counselors for both elementary and junior high schools in all junior high school blocs. It is also tightening setups for early detection and resolution of bullying.



Color belts for safety After



Before

Measures to ensure safety on roads children use to attend school

Yokohama is going to take more action to ensure traffic safety on roads taken by children to walk to and from school. The measures include construction of sidewalks and demarcation of "color belts" for safety.

Approaches looking beyond the Plan



Assurance of medical functions for 2025

In preparation for the arrival of 2025, which will be accompanied by rapid population aging, Yokohama is formulating the next installment of the medium-term Yokohama Healthcare and Medical Service Plan, promoting the development of and support for physicians to provide home healthcare, and analyzing medical big data.



Preparations for the Rugby World Cup 2019TM and Tokyo 2020 Olympics & Paralympics

The Rugby World Cup 2019TM will be the first to be held in Asia. Yokohama will be hosting the final match, which is sure to attract worldwide attention. Yokohama will also be the site of football matches and baseball & softball games in the Tokyo 2020 Olympics.



Photo by Tokyo 2020/ Shugo TAKEMI

Besides making full preparations for hosting events in these two spectacles, Yokohama intends to use them as a springboard for wide-ranging approaches to promote not only sports but also culture and the arts, economic activities, education, and the city itself. In this way, these events will leave a legacy, in both tangible and intangible forms, as a present to our children, the principals of the next generation.

Please see the website for information on other major approaches.

横浜市 29年度予算 Search

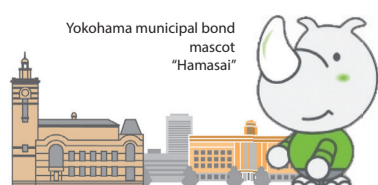
Information on the city finances

Financial Situation in Yokohama

Contact: Financial Affairs Division, Finance Bureau
Tel: 045-671-2231 Fax: 045-664-7185

横浜市財政課

Search



A pamphlet will be available beginning in late April at the Yokohama City Government Citizen Information Center and the Public Relations Section of the ward offices. It will also be available on the website.



QR code

Long-term care insurance premium reductions and exemptions

For people who sold land or other property in 2016 and had a special deduction on long- or short-term income from transfer of property

If you sold land or other property in 2016 and had a special deduction on your long- or short-term income from transfer of property, you may be eligible for a reduction of or exemption from long-term care insurance premiums, based on a recalculation by subtracting this special deduction from your total income.

Upon confirmation of your insurance premium indicated on the notification of the determination of your long-term care insurance premium to be sent to you in June, please consult the Health Insurance and Pension Division of the ward office which issued your notification.

Contact: Long-term Care Insurance Division, Health and Social Welfare Bureau
Tel: 045-671-4253 Fax: 045-681-7789

You may also contact the Health Insurance and Pension Division at the ward office which issued your notification.

About long-term care insurance services

Revision of compensation for long-term care will result in change in the amount of the beneficiary burden.

A revision was made in compensation for long-term care in order to improve treatment of care workers, effective starting April. Even if you receive the same long-term care services as before, there may be a change in the amount of the beneficiary burden for them.

The actual beneficiary burden varies with the type of service and other factors. To learn about it, check with the office providing the service you are using or your care manager.

Contact: Long-term Care Insurance Division, Health and Social Welfare Bureau
Tel: 045-671-4255 Fax: 045-681-7789



Service outline and member registration

Contact: Executive Secretariat Tel: 0120-720-023 (8:00 a.m. – 8:00 p.m.)

Project outline

Contact: Project Promotion Division, Climate Change Policy Headquarters
Tel: 045-671-2719 Fax: 045-663-5110



“Choi-mobi” is the name of a car-sharing scheme that is convenient for little excursions. The cars are cute little electric vehicles that seat two. They are environmentally-friendly and emit absolutely no carbon dioxide gas in operation. Why not take a drive around Yokohama in a Choi-mobi model this spring?

We've renewed the Choi-mobi scheme.

Under the new car-sharing scheme, drivers must return the cars to the place of departure. Cars cannot be returned or abandoned in places other than the place of departure. While they are in use, the cars can be parked free of charge in temporary parking space especially for Choi-mobi cars.

Rental places (stations)

Kannai, Sakuragicho, and Yokohama Station areas
14 locations in tourism areas

Operating hours

8:00 a.m. – 8:00 p.m. (except at certain stations)

Fee (per use)

Basic fee: 200 yen
Additional 250 yen every 15 minutes
Maximum fee: 3,000 yen





A call center for municipal preventive vaccinations will be opened on April 3 (Mon.).

Tel: 045-330-8561 Fax: 045-664-7296

Call hours

9:00 a.m. – 5:00 p.m.

Closed on Saturday, Sunday, and holidays

The 33rd National Urban Greenery Fair Yokohama

Spring nights – Enjoy the Minato Garden!

A festival of flowers and greenery, the 33rd National Urban Greenery Fair Yokohama is now under way. One of the main sites is the area of parks and gardens along the port. Some of the venues in this area are lit up at night. The dreamlike space bathed in enchanting light looks quite different from daytime. This spring, you can enjoy the sight of flowers and greenery even at night!

Every day until June 4 (Sun.)!

(1) Grand Mall Park
– people, trees, and crystal fireworks



Visitors can use their smartphones to launch digital fireworks depicting cherry blossoms, tulips, and roses, the Fair's theme flowers. The devices transform the Park into a space for art using light.

(2) Zou-no-hana Park – Garden Bear's garden



Taking Garden Bear, the Fair mascot, as its motif, this garden is the very symbol of the Fair. When illuminated, it is enveloped in a magical atmosphere.



Fair mascot: Garden Bear
© ITOON/GN2017

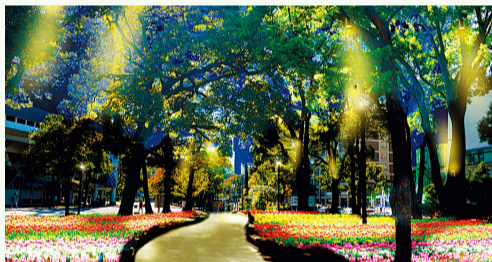
★ Venues with illumination

(3) Yamashita Park – a rose garden of the future



An archway of roses is turned into a tunnel of light, and the grass and flowers, a carpet of light.

(4) Yokohama Park – a garden with 160,000 tulips



Flower beds with a total of 160,000 tulips, one of the famed Yokohama sights in spring

Information about events

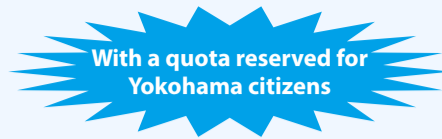
Contact: NTT Hello Dial Service
Tel: 050-5548-8686 (8:00 a.m. – 10:00 p.m. until June 4)

Information about the program

Contact: National Urban Greenery Fairs Promotion Division, Environmental Planning Bureau
Tel: 045-671-3789 Fax: 045-663-0027



Garden Necklace YOKOHAMA 2017



Start of acceptance of applications for Yokohama Marathon 2017!

Yokohama is accepting applications for participation in Yokohama Marathon 2017 beginning on April 5 (Wed.). Citizens will have a double chance for participation, because they can apply under the citizen quota as well as the general quota! With this running, we have also expanded the maximum number of entrants by 3,000, to a total of 28,000.

Application period

12:00 p.m., April 5 (Wed.) – May 18 (Thurs.)

If the number of applications exceeds the quota, entrants will be picked by a drawing (except for the charity quota etc.).

Date of the marathon: October 29 (Sun.)

Runners will register at the Yokohama Red Brick Warehouse Event Plaza on October 27 (Fri.) and 28 (Sat.).

Events	Maximum number of entrants	Fee
Full marathon	26,950	15,000 yen
1/7th of a full marathon*	1,000	4,000 yen
1/7th of a full marathon* (wheelchair)	30	4,000 yen
2 km (wheelchair)	20	3,000 yen

*6.0278 km

For details about eligibility and the application procedure, check the application information on the Marathon website and in leaflets available at the Public Relations Section of your ward office.

About entry in Yokohama Marathon

Contact: Lawson Ticket
Tel: 0570-000-732 (10:00 a.m. – 8:00 p.m.)

About Yokohama Marathon

Contact: Secretariat
Tel: 045-651-0666 Fax: 045-226-5037
(9:30 a.m. – 5:00 p.m., Monday – Friday (except on holidays))

You are the people supporting Yokohama Marathon 2017.

Start of acceptance of applications for Marathon volunteers as well on May 9 (Tues.)

We are calling for volunteers to assist entrants in Yokohama Marathon 2017. The support provided by your smile will give the runners a big boost. Become a volunteer and help enliven the event with your fellow volunteers!



You can now obtain a copy of your resident certificate at convenience stores nationwide!

Yokohama has begun a service for issuance of copies of resident certificates and various other certificates at convenience stores, using My Number cards. Use of this service requires your My Number card. For details, check the website.

Contact: City Call Center
Tel: 045-664-2525 (8:00 a.m. – 9:00 p.m.) Fax: 045-664-2828



My Number mascot "Maina-chan"