

Passing traditional crafts nurtured by history on to succeeding generations



Fumiko Hayashi
Mayor of Yokohama

Japan's sophisticated handicrafts are a focus of worldwide attention. Many people have undoubtedly been moved by the careful craftsmanship they exhibit. In Yokohama as well, there are many meisters —master craftspersons—who possess capabilities and techniques that have been passed down through the ages and are engaged in extensive activity.

Our kimono tailors breathe life into textiles as they make kimono out of them. Our carpenters wield superlative skills in building traditional edifices in temples and shrines. And our chefs have studied the culinary cultures of the world and incorporate foodstuffs from Yokohama in their dishes to introduce them to diners. Our stained glass artisans present the beauty of light in Yokohama with their sensitive techniques. Our hairdressers create elegant designs through original techniques. The precise and lovely finishes produced by subtle manual adjustments are alive in our homes and daily activities as reflections of masterly skills even today.

Times have changed, and consumer needs have shifted toward more casual and affordable articles. In this situation, Yokohama's meisters are constantly exercising their ingenuity to devise and refine new techniques adapted to the demands of the present, while applying their traditional skills. To see that their know-how is passed on, they are also making earnest efforts to transmit it to youth and children.

This month, we are holding the Yokohama Meister Festival to bring people into touch with the city's meisters and their techniques and skills. I strongly encourage all to come to this festival of craft culture, and to bring their children along. It is an excellent opportunity for firsthand experience of the dedication and wonderful handwork of these meisters.



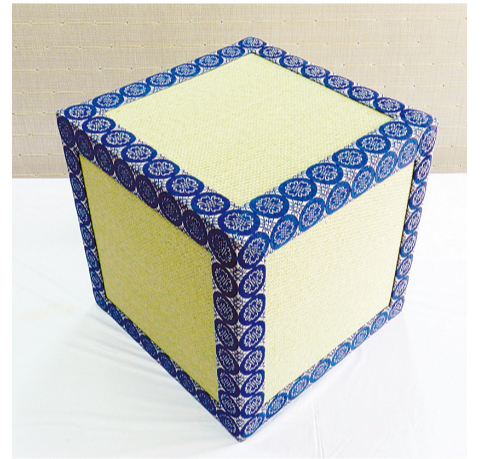
Yokohama Shibayama lacquerware
(lacquerware artisan: Teruo Miyazaki)



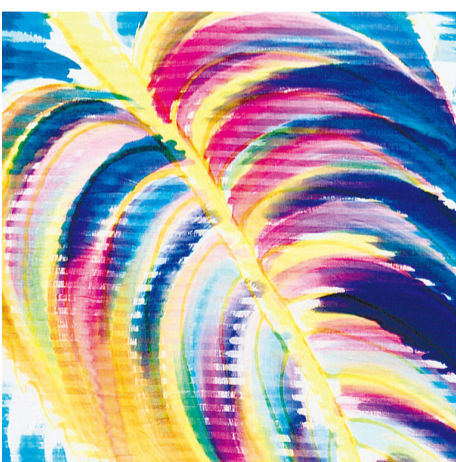
Yokohama furniture
(furniture maker: Katsuhito Uchida)



Western cuisine
(chef: Toshihiko Yoshida)



Tatami cube
(tatami maker: Hiroshi Takahashi)



Yokohama scarves
(dyeing and weaving craftsperson: Sukenari Yamamura)



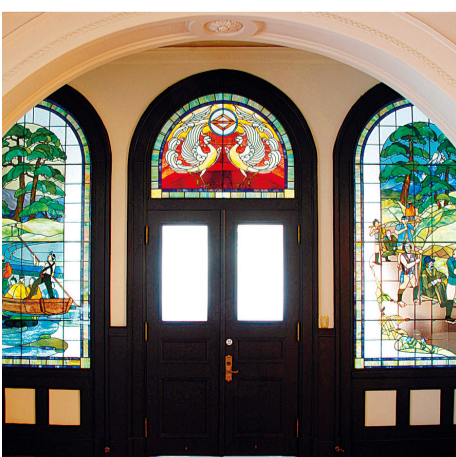
Iron kettle with a "Mount Fuji mist and hail" design
(kettle maker: Takashi Nakata)



Yokohama poles
(maker of Japanese-style poles: Kisaburo Yoshida)

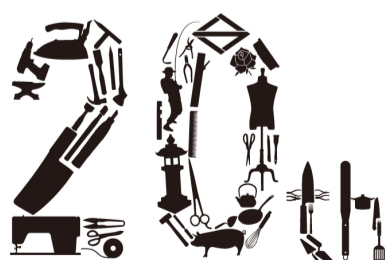


Kimono with a shimmer finish
(kimono tailor: Eiji Suzuki)



Restored stained glass at Yokohama Port Opening Memorial Hall
(stained glass artisan: Takeo Hirayama)

横浜マイスター



Anniversary

Genuine crafts alive and well in Yokohama

20th anniversary of the Yokohama Meister program

→ For more details, see the next page.

Genuine traditional crafts alive and well in Yokohama— The 20th anniversary of the Yokohama Meister program

Contact: Employment and Labor Affairs Division, Economic Affairs Bureau
Tel: 045-671-4098 Fax: 045-664-9188

Honing skills and passing on their marvel

In fiscal 1996, Yokohama began selecting outstanding craftspeople who reside in the city and are active in the fields of apparel, food, housing, and lifestyle as Yokohama Meisters. Fiscal 2016 consequently marks the 20th anniversary of this program. So far, a total of 56 people have been selected in 39 different professions. Besides possessing outstanding skills, Yokohama Meisters are engaged in activities to pass on their precious know-how and spread the word about the marvel of handicrafts and handwork.

Determination of new Yokohama Meisters in fiscal 2016



Yutaka Takahashi
Formwork carpenter

Mr. Takahashi is versed in the work of making forms that serve as molds for poured concrete. He exercises particularly outstanding skills in execution of methods for shortening the time required for construction by large construction companies.



Toshiaki Tanaka
Tailor

Mr. Tanaka handles men's apparel that does not lose its shape even after long years of wear. He is a stickler about using hand-made padding, and his collar padding seams exhibit the meticulousness and care of his stitching.

横浜マイスター

Yokohama Meister Festival

November 27 (Sun.), 10:00 a.m.–4:00 p.m.
Yokohama Craftspeople Assembly Hall
(2-4-7 Bandai-cho, Naka Ward)

Yokohama Meisters representing the city's craftspeople will showcase the solid, masterly skills they exercise with heart.

Food service*

Visitors will be able to enjoy the flavor of master chefs right in the venue.

Hands-on Crafts Class*

Visitors can take up the challenge of making things together with Meisters.

*Application: The deadline for applications is **November 16.**

A fee will be charged for participation. If there are many applications for each session, participants will be selected by drawing. For more details, please see the flyers at the Yokohama City Government Citizen Information Center and Public Relations Section of the ward office, or check the city website.

Display of skills, and exhibit and sale of works

Visitors will be able to see, touch, and experience firsthand the outstanding skills of Yokohama Meisters.



Watching a demonstration at last year's Exhibit

Yokohama Meister Exhibit

January 22 (Sun.), 10:00 a.m.–4:00 p.m. (tentative)
Center Plaza, Civil Plaza

9F, Yokohama Shintoshin Building, 2-18-1 Takashima, Nishi Ward, and other sites

The program tentatively includes demonstrations by Yokohama Meisters, exhibit of works embodying their sophisticated skills, sessions for consultation about housing and apparel, and an apparel show.

*The program is subject to change.

Please consult us!

Provision of consultation about human rights by civil liberties commissioners

Human rights consultation

(Citizen's Consultation Room, Civic Affairs Bureau)

Tel: 045-671-2306 Fax: 045-663-3433

Wednesday, 1:00–4:00 p.m.

Face-to-face consultation provided in meetings for which appointments have been made by telephone (Excluding holidays and the New Year's holiday season*)

Everybody's Human Rights Emergency Hotline

(Yokohama District Legal Affairs Bureau)

Tel: 0570-003-110 Tel: 045-641-7926

Children's Human Rights Emergency Hotline

(Yokohama District Legal Affairs Bureau)

Tel: 0120-007-110 Tel: 045-212-4365

Women's Human Rights Emergency Hotline

(Yokohama District Legal Affairs Bureau)

Tel: 0570-070-810 Tel: 045-212-4364

Monday–Friday, 8:30 a.m.–5:15 p.m.

(Excluding holidays and the New Year's holiday season*)

Consultation services are available at Yokohama City Hall and the Yokohama District Legal Affairs Bureau.



Consultation about human rights

Visits for education about human rights are also made to elementary schools.



Human Rights Caravan

Consult experts instead of anguishing alone!

Consultation on gender-based discrimination etc. (Gender Equality Center Yokohama)

Tel: 045-862-5063

9:00 a.m.–4:00 p.m. (excluding Thursdays, Sundays, and the New Year's holiday season*)

Mental and Physical Well-being Telephone Consultation Center

(Gender Equality Center Yokohama)

Tel: 045-871-8080

- Tuesday–Thursday: 9:00 a.m.–4:00 p.m. (excluding the fourth Thursday of each month and the New Year's holiday season*)

- Monday & Friday: 9:00 a.m.–4:00 p.m. and 6:00–8:00 p.m. (excluding holidays and the New Year's holiday season*)

Yokohama LGBT Consultation (SHIP, a specified non-profit organization)

Tel: 045-594-6160

Wednesday, Friday, & Saturday: 4:00–9:00 p.m.

Sunday: 2:00–6:00 p.m. (excluding the New Year's holiday season*)

Consultation about domestic violence (Yokohama DV Consultation and Support Center)

Tel: 045-671-4275

Monday–Friday, 9:30 a.m.–12:00 p.m., 1:00–4:30 p.m. (excluding holidays and the New Year's holiday season*)

Tel: 045-865-2040

- Monday–Friday: 9:30 a.m.–8:00 p.m.

- Saturday, Sunday, and holidays: 9:30 a.m.–4:00 p.m.

(excluding the fourth Thursday of the month and the New Year's holiday season*)

Multilingual consultation about domestic violence

(Kanagawa Prefectural Spousal Violence Counseling and Support Center)

Tel: 050-1501-2803

Monday–Saturday, 10:00 a.m.–5:00 p.m. (excluding the New Year's holiday season*)

(English, Chinese, Korean, Spanish, Portuguese, Thai, and Tagalog)

Consultation for crime victims (Yokohama Crime Victim Consultation Center)

Tel: 045-671-3117 Fax: 045-681-5453

Monday–Friday, 9:00 a.m.–5:00 p.m. (excluding holidays and the New Year's holiday season*)

* December 29–January 3

Consultation is also available at the Health and Welfare Center in each ward.
In emergencies, please contact the local police station or outpost!

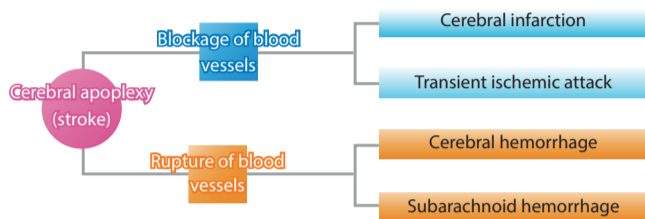
2016 campaign to educate Yokohama citizens about cerebral apoplexy

Learn **FAST** for your loved ones.

“FAST” is an acronym for the signs of cerebral apoplexy and response to them: facial paralysis (F), paralysis of the arm (A), speech impairment (S), and “waste no time dialing 119” (T).

What kind of disease is cerebral apoplexy?

Cerebral apoplexy (stroke) occurs suddenly, due to the blockage or rupture of blood vessels in the brain.



Request from a physician

“The brain is a very delicate organ. Brain cells will die in any part where the flow of blood has stopped for even just five minutes. The sooner we can begin treatment, the more brain cells we can save. If you suspect an attack of cerebral apoplexy, it is extremely important to immediately call an ambulance so the patient can get treatment at a hospital specializing in this area.”

Dr. Ken Jokura, Assistant Director, Yokohama Stroke and Brain Center (from his address in the FY2015 lecture program to educate citizens about cerebral apoplexy)

Face The face is contorted.

One side of the face cannot be lifted and is contorted.



Arm One arm (and leg) cannot be used.

One arm sags.



It's **dangerous** to assume that the condition may pass and to wait and see!

Speech The person's speech is slurred.



The person cannot pronounce words properly, think of the proper word, or understand what others are saying.

Time Time is of crucial importance!



Dial 119 immediately!

If you see any of these signs, immediately call an ambulance!

Request from an emergency medical technician about 119 calls

1. **Jot down your address on a memo pad kept by the telephone in case you become flustered and unable to remember it when you call.**
2. **It is important for us to know whether the patient is conscious or unconscious. Please confirm consciousness.**
3. **Please confirm the hospital which the patient visits.**

Minoru Ikeya, emergency medical technician, Ambulance Service Division, Fire Bureau (from his address in the FY2015 lecture program to educate citizens about cerebral apoplexy)

The lecture program to educate citizens about cerebral apoplexy will be held on December 22 (Thurs.). For more details, please check the “Lectures & Classes” section on the Hama Information page.

Contact: Yokohama Stroke and Brain Center

Tel: 045-753-2500 Fax: 045-753-2859



My Number mascot
“Maina-chan”

You can use e-Tax with your My Number card.

Taxpayers can use their My Number card or the electronic certificate contained in their Basic Resident Register Card for e-Tax, i.e., the electronic filing of returns for and payment of national taxes. If the electronic certificate contained in the Basic Resident Register Card has expired, the holder must be issued a My Number card even if the Register Card has not expired. It may take about two months for you to receive your My Number card. Please apply for issuance early.

Contact: Yokohama My Number System Call Center

Tel: 0120-045-505 Fax: 045-664-5917

Monday–Saturday: 9:00 a.m.–5:00 p.m. (excluding Sundays and holidays)

The toll-free service is not available for IP phones and certain other types of phones. If you have such a phone, dial 045-367-5272 (for a charge).

The two contact telephone numbers noted above will not be in service beginning on December 29.

Beginning on December 29, please contact the following parties.

- About the My Number system: City Call Center Tel: 045-664-2525
- About e-Tax: Help desk (National Tax Agency) Tel: 0570-01-5901 (excluding the New Year's holiday season*)

Please see the distribution notification for the method of receiving your My Number card.

* December 29–January 3