

## Disaster prevention and mitigation begins with daily efforts for preparedness



Fumiko Hayashi  
Mayor of Yokohama

The Great Kanto Earthquake struck Yokohama 93 years ago. Even today, people in the regions affected by the Great East Japan Earthquake and the Kumamoto Earthquake continue with their steady and assiduous efforts for recovery. From several disasters, people have learned many lessons and improved their preparations. In Yokohama as well, we have revised our disaster preparedness plan, introduced a tsunami warning system, provided subsidies for installation of quake-sensitive circuit breakers, and otherwise done our best in preparation for a major earthquake.

Besides fuller public (governmental) assistance, it is also essential for each and every citizen to be resolved and make preparations to protect him or herself, and for people in the district and neighborhood to make arrangements for community assistance based on mutual aid. A questionnaire we conducted last year found that, although a remarkable 90 percent of the respondents felt apprehensions about occurrence of a disaster, the households which had the requisite stock of water still accounted for only about 40 percent. We are requesting our citizens to stock three days' worth of food and drinking water for each person in the household, take measures to keep furniture from toppling, and confirm the locations of hazardous spots and evacuation sites in the neighborhood on hazard maps and other such materials. I would like to encourage them to take an active part in drills for disaster preparedness on the district level and to build the related concrete ties with others. I urge you to pay a visit with your family and neighbors to the Yokohama Disaster Risk Reduction Learning Center, which reopened after renovation in April.

Preparations for disasters are never finished. The preparations you make on a daily basis will save precious lives. Let's all join in taking action on measures for disaster prevention and mitigation!



### Preparedness through daily action by one and all

→ For details, see the next page.



# Just think about when a disaster strikes

A major earthquake could occur at any time. How about taking another look at your existing preparations and countermeasures?

Contact: Crisis Management Division, General Affairs Bureau  
Tel: 045-671-4351 Fax: 045-641-1677

## Stock a little more than you need and use ordinarily, too Rolling stock

### Key points

#### A stock matching your family makeup and lifestyle

- Keep a slightly large stock of foodstuffs and items of daily use.
- Use the stock beginning with the oldest items and buy new ones to replenish it.
- See the following link for ways of cooking foodstuffs.

Cookpad, the Yokohama official kitchen

横浜市 公式キッチン



Stock items that match your family makeup, and consume them on a daily basis

## Injuries in times of disaster

### Select the hospital or clinic that is the right one to see for the symptoms

#### Yokohama's setup for supply of treatment in times of disaster

##### ■ Serious injuries

Present or imminent risk to life

→ Go to a disaster center hospital / 13 in Yokohama, indicated by a red banner

##### ■ Medium injuries

No risk to life, but need for hospitalization

→ Go to an emergency hospital for use in times of disaster / 102 in Yokohama, indicated by a yellow banner

##### ■ Minor injuries

No risk to life, and no need for hospitalization

→ Go to a clinic / indicated by a yellow banner

■ In the case of slight injuries: application of first aid by family members or neighbors (self-help and community assistance)

横浜市 災害医療

Contact:  
Director for Emergency and Disaster Medical Care, Medical Care Bureau  
Tel: 045-671-3932 Fax: 045-664-3851

To avoid becoming injured and unable to flee in time

## Prevent furniture from toppling

### Steps to prevent furniture from toppling

In major earthquakes, furniture and furnishings that are toppled or displaced can cause injury and delay flight. To protect your own life and those of your family, be sure to take action to prevent furniture and furnishing from toppling.

First 200 applicants

Free attachment of fixtures to prevent toppling

Yokohama will attach fixtures to prevent toppling free of charge for households whose members all meet any one of the following three conditions: (1) are aged 75 or over, (2) have the disabled persons booklet, or (3) are certified as requiring nursing care or support. (The beneficiaries must bear the cost burden for the fixtures.)

Application: September 15 (Thurs.)–December 15 (Thurs.)

Contact: Yokohama Town Development Center

Tel: 045-262-0202 (Mon.–Fri., 10:00 a.m.–4:00 p.m.)

Fax: 045-315-4099 (only for those who have hearing impairments or speech disabilities)

Automatically turn power off when they sense a big tremor

## Quake-sensitive circuit breakers

### Key points

Quake-sensitive circuit breakers are devices that automatically cut the supply of power when they sense a large tremor.

- Can be expected to have a significant effect for greatly reducing the incidence of fires in the event of earthquakes.
- Two types: simple and panelboard.

Panelboard type

Provision of subsidies for the cost of installing quake-sensitive circuit breakers

- Eligible parties  
Individuals who already own or intend to build new housing within a district eligible for the subsidies
  - Eligible products  
Panelboard type
  - Subsidy rate & amount, and number of cases  
Existing housing:  
One-half of the total installation cost (ceiling amount: 40,000 yen), first 230 applications  
Newly built housing:  
Uniform amount of 10,000 yen, first 50 applications
- \* For detailed information on items such as the districts eligible for subsidies, please see Yokohama's website or the brochures in the Public Relations Section of the ward offices.

横浜市 感震ブレーカー   Application: starting on September 15 (Thurs.)

Contact: Crisis Management Division, General Affairs Bureau  
Tel: 045-671-2011 Fax: 045-641-1677

### Key points

- Select the medical institution to visit in correspondence with the degree of urgency and seriousness.
- Red or yellow banners are flying at medical institutions that can be visited in times of disaster.



Look for the colored banners!

# Holding of the 33rd National Urban Greenery Fair in March 2017!



**Contact:**  
National Urban Greenery Fairs Promotion Division, Environmental Planning Bureau  
Tel: 045-671-3789 Fax: 045-663-0027

**Fair period: March 25 (Sat.)–June 4 (Sun.), 2017**

全国都市緑化よこはまフェア

Search

Yokohama will be hosting the 33rd National Urban Greenery Fair beginning in March 2017. For the Fair, one million flowers will be planted on Yokohama's beautiful streets and give the city a gorgeous look in the springtime.

**Venue** "Yokohama, Yesterday and Tomorrow" Minato Garden  
Sites: Yamashita Park, Grand Mall Park, Harbor View Park, Yokohama Park, Nihon Odori Street, Zou-no-Hana Park, Shinko Central Plaza, and Canal Park

Nihon Odori will be decorated with tulips, roses, and other flowers. Meanwhile, the Rose Garden in Harbor View Park will be planted with 1,200 English Roses as well as silver and blue annual and perennial plants.



Conceptual drawing of the appearance of Nihon Odori



Conceptual drawing of the appearance of Harbor View Park

**Venue** "Green-rich Yokohama," Satoyama Garden  
Sites: Future site of botanical gardens (adjacent to Yokohama Zoological Gardens "Zoorasia")

At sites such as Yokohama's biggest flower garden measuring 10,000 square meters and the Iris Garden featuring beautiful scenery, visitors will be able to sense and experience firsthand the charms and pleasures of local natural settings accenting the character of Yokohama, where many green tracts remain.



Conceptual drawing of the flower garden



Conceptual drawing of the Iris Garden

## An event to be held about half a year before!

It is about six months before the start of the Yokohama Fair. Please experience the joys of the Yokohama Fair while communing with flowers and greenery. Please check the details on the city website.

### Schedule: September 24 (Sat.) and 25 (Sun.)

Venue: Yokohama Red Brick Warehouse  
3F Hall, Building 1

#### Talk session

Each day, first 200 visitors to arrive on that day

**September 24 (Sat.), 10:30 a.m.–**  
Guests: Narumi Komatsu (author) and others

**September 25 (Sun.), 10:30 a.m.–**  
Guests: Masashi Mikami (Yokohama Fair Ambassador) and others



Narumi Komatsu



Masashi Mikami

Visitors will be given a gift.

#### Workshop

1:30–4:00 p.m. each day

Flower arrangement accessories

First 120 parties to arrive each day

\* Other subjects include Garden Bear coloring books and application of face stickers



Making wristlets



## Start of the B. League!

The new Japanese men's pro basketball league is starting up, thanks to consolidation of the former Basketball Japan (BJ) League and the National Basketball League (NBL).



—challengers off on a new voyage!

The Yokohama B-Corsairs, who are based at the Yokohama International Swimming Pool, are participating in the first part (B1) of the B. League. Let's all support our team as they take aim at the championship in the first year of the B. League!



**B-Corsairs vs. Sunrockers-Shibuya**  
September 24 (Sat.), 6:00 p.m.  
September 25 (Sun.), 2:00 p.m.  
Yokohama Cultural Gymnasium (Naka Ward)



©MOMOSE  
Yokohama B-Corsairs mascot Cors



**B-Corsairs vs. Niigata Albirex BB**  
October 22 (Sat.), 6:00 p.m.  
October 23 (Sun.), 2:00 p.m.  
Yokohama International Swimming Pool (Tsunami Ward)



**Winners will be invited to a game!**  
Date: October 23 (Sun.) Seating: non-reserved, 2F  
Eligibility: 10 couples, 20 persons chosen by drawing  
Application: application filed on the city website no later than October 10 (a holiday)

横浜ビー・コルセアーズ

Search

Contact: Sports Promotion Division, Civic Affairs Bureau  
Tel: 045-671-3584 Fax: 045-664-0669

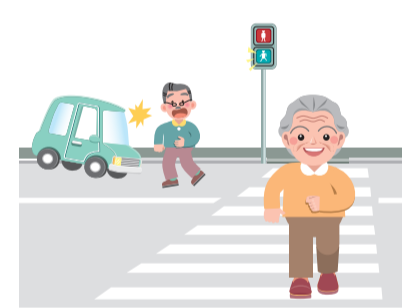


## The aged make up 45% of the traffic fatalities in Yokohama. Obey the rules and take action to ensure safety!

People aged 65 or over accounted for 45 percent of the traffic fatalities that occurred in Yokohama in 2015. About 80 percent of these aged victims were walking at the time, and most of the accidents occurred no more than 500 meters from the homes of the victims. Let's all obey the traffic rules to prevent traffic accidents.



Wear reflective materials



Cross streets at the crosswalk

Contact: Traffic Safety and Bicycle Policy Division, Road and Highway Bureau  
Tel: 045-671-2323 Fax: 045-663-6868

## Get bicycle insurance

There have occurred traffic accidents in which cyclists have been ordered to pay large sums in damages. Please take out a bicycle insurance policy in view of the risk of such an accident.



My Number mascot "Maina-chan"

## My Number card To people who have received the distribution notification letter

Our website is convenient for making reservations to pick up your My Number card.

横浜市 マイナンバーカード 予約

Search

We have sent a distribution notification letter (postcard) to people whose My Number card is ready for them to pick up. The postcard notes the deadline for pickup. Even if their deadline has already passed, people whose pickup deadline is in 2016 may pick up their My Number card at a temporary window for distribution in the ward of their residence by December 28, upon advance reservation. If they cannot pick up their My Number card by December 28, they may have to make a new application. Please make your reservation and come to the temporary window early!

Yokohama My Number System Call Center

**Tel: 0120-045-505**

Fax: 045-664-5917

Hours: 9:00 a.m.–5:00 p.m., Monday–Saturday (closed on Sundays and holidays, and in the year-end holiday season)

\* The toll-free service is not available for IP phones and certain other types of phones. If you have such a phone, dial 045-367-5272 (for a charge).