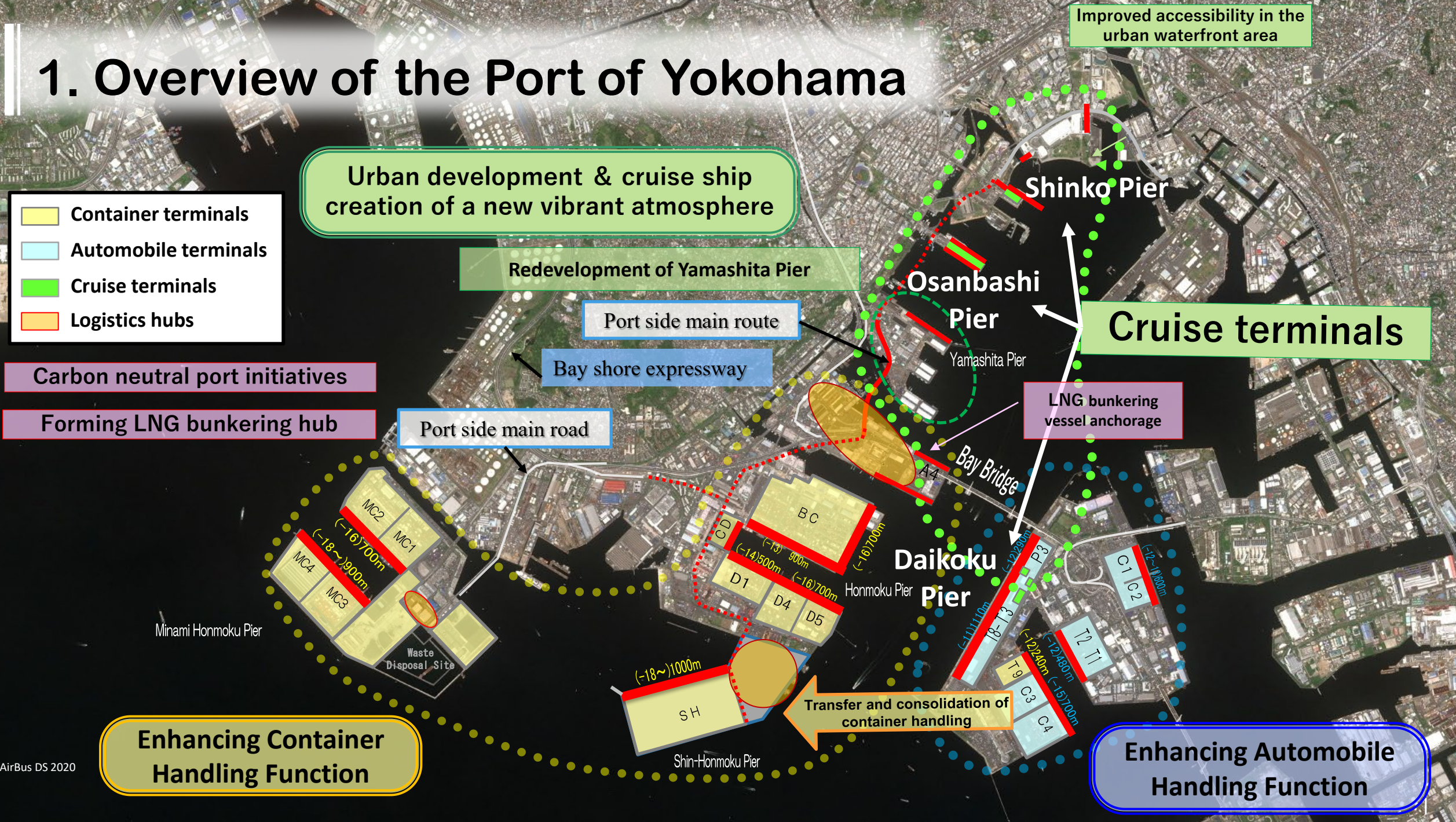


Port of YOKOHAMA

- The Gateway to Japan -



1. Overview of the Port of Yokohama



1. Overview of the Port of Yokohama



The Main Port to the Metropolitan Area and Eastern Japan

- ✓ Huge market in its hinterland, the metropolitan area with 40 million people.
- ✓ Connected by a network of roads to manufacturing centers in the eastern part of Japan.
- ✓ The highways and roads are fully developed and greatly improved for easy access to the port.



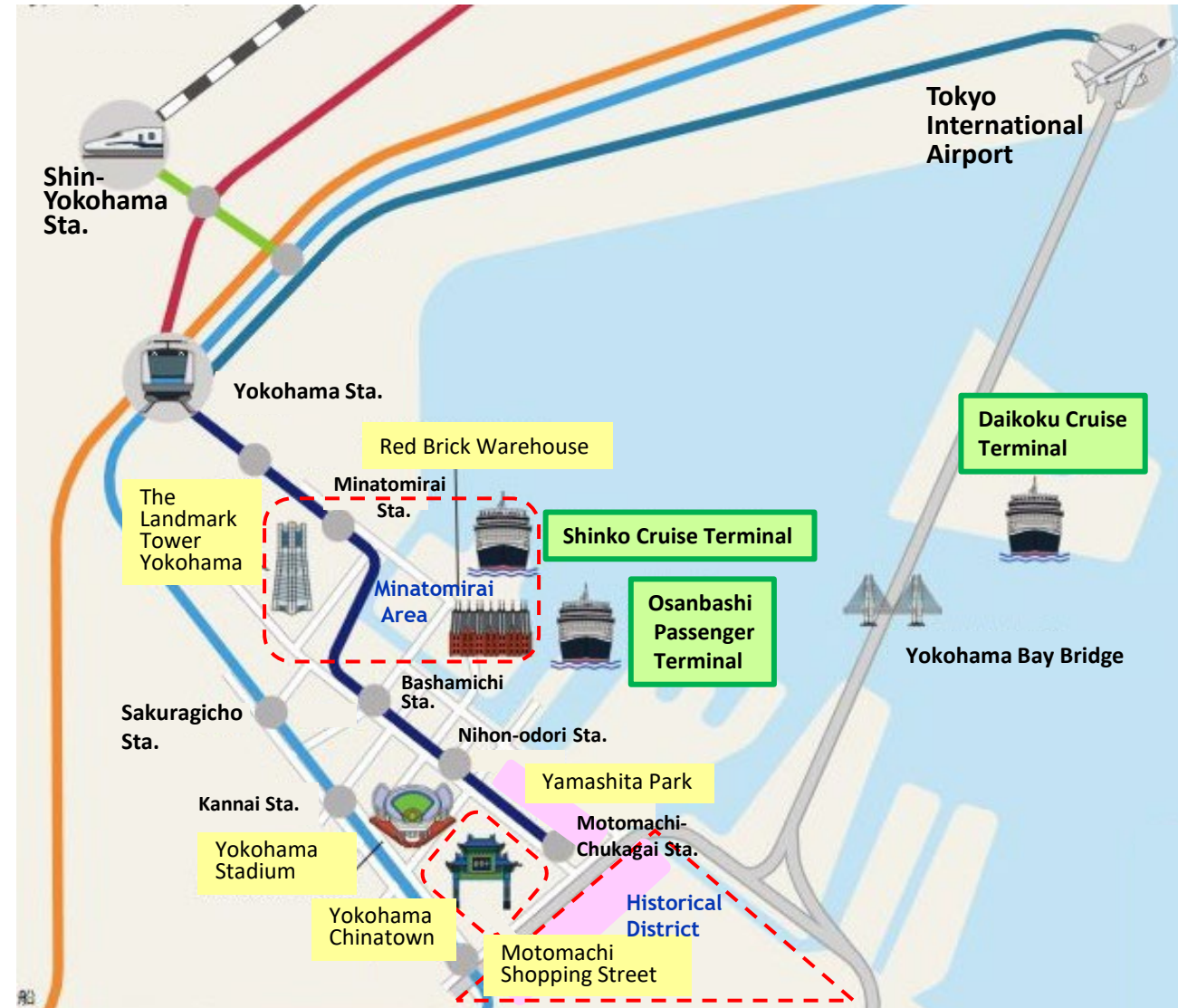
Source: Modified based on MLIT materials

1. Overview of the Port of Yokohama

■ Convenient location and easy access

- * Within 25 min. from Haneda International Airport by car
- * Within 25 min. from Shin-Yokohama Station by car
- * Both “fly&cruise” and “drive&cruise” are available

■ Waking Distance from Port to Town



2. Why Yokohama



Reliable Services & Facilities

▶ **3 Cruise Terminals**

- 5 ships can berth simultaneously
- Suitable for a wide spectrum of cruise ships, ranging from casual to premium and luxury classes

▶ **Trustworthy terminal operations**

▶ **Convenient location and easy access**

- Best choice for Fly & Cruise and Drive & Cruise passengers
- Within 25 min. from Haneda International Airport by car

▶ **24-hour service for port entry, water supply, ship supply**

▶ **Environmental Friendliness**

- 1-hour shorter navigation compared to Tokyo Port
 - Less fuel and Co2 for cruise lines
 - More leisure time for passengers
 - Design of Shore Power Supply Facilities

2. Why Yokohama



Good Environment around the port

▶ **Welcoming cityscape** for Passengers

- Scenic Minato Mirai Area

▶ **Abundant Variety of Recreation**

- Chinatown
- Luxury hotels
- Concert venues & jazz bars
- Sports facilities
- Beautiful parks
- Events (Fireworks, fairs and markets...and more)

▶ **Walking distance** to the historical downtown

- Enjoy a stroll through the port town

▶ **Cruise-Friendly Program**

- Over 120 shopkeepers & leisure facilities are members
- Hospitality for passengers and crew
 - Discounts
 - Welcome gifts
 - Communication in English ... and so on

3. Cruise Facts

Actual Results (2025)

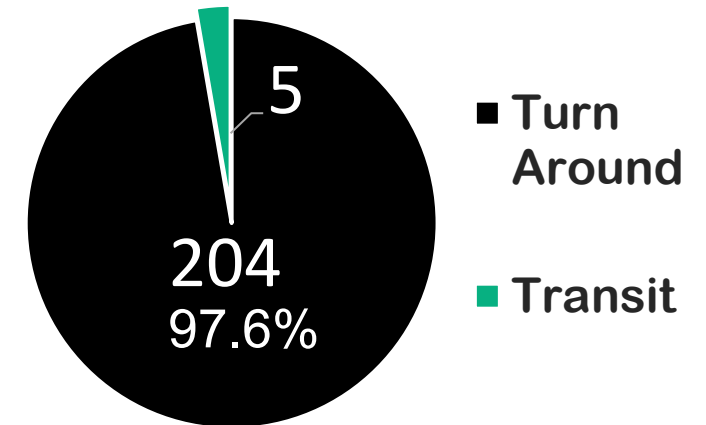
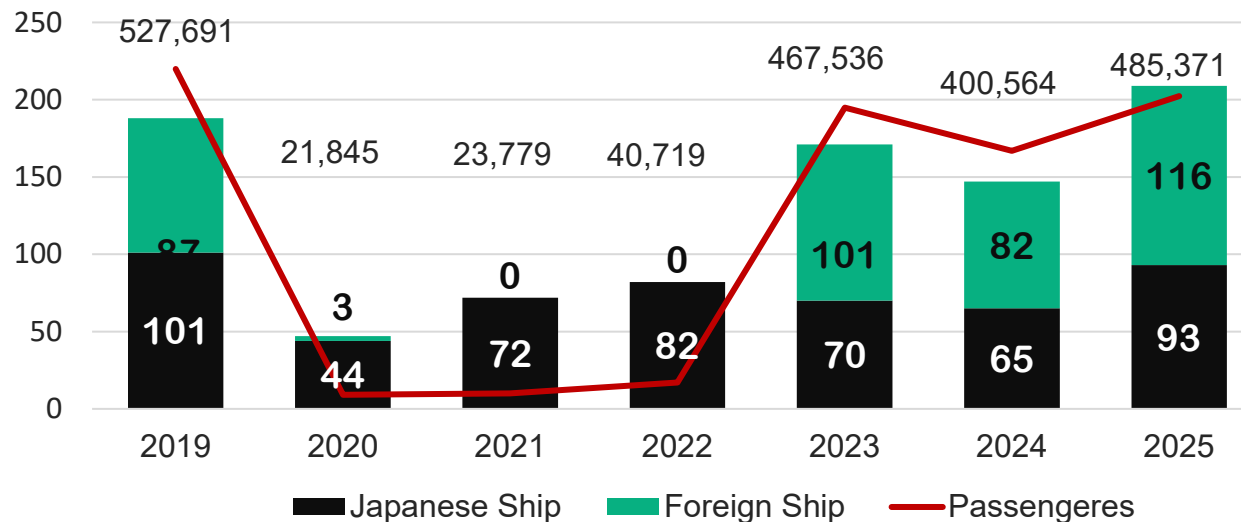


Number of
Cruise Calls
209



Passengers
485K

Number of Calls & Passengers



3. Cruise Facts

Cruise Lines Calling on Yokohama(2025)

Japanese Cruise Company



MITSUI OCEAN CRUISES



And more...

4. Cruise Port Initiatives

**Daikoku Pier Cruise Terminal
(P3-4, T3-6)**

L:1,030m D:12-10m

(Accommodates 120,000GT and above)

Daikoku Pier

**Yokohama Bay Bridge
(Air Draft 55m)**

Honmoku Pier

National road 357

Shinko Pier

Cruise Terminal

L:340m D:9.5m

(Max. Size: 110,000GT)

**Osanbashi International
Passenger Terminal**

L:450m D:12-10m

(Max. Size: 110,000GT)

Shinko Pier

Osanbashi

Yamashita Pier

4. Cruise Port Initiatives

3 Cruise Terminals

★Japan's first★
5 Cruise Ships arrive
at the same time
(April 28th, 2023)

*Accept all types
and classes of
ships



4. Cruise Port Initiatives



4. Cruise Port Initiatives

Three Cruise Terminals



	Osanbashi Passenger Terminal	Daikoku Pier Cruise Terminal	Shinko Pier Cruise Terminal
Terminal Facilities	Approx. 44,000 m ²	Approx. 5,600 m ² (Site area: Approx.50 Acres)	Approx. 4,200 m ²
Berth Length	A & B: 450m, C & D: 450m	P3&4: 290m, T3-6: 740m	S9: 340m
Water Depth	A & B: 12m, C & D: 10-11m	P3&4: 12m, T3-6: 11m	S9: 9.5m
Apron Width	A & B: 20m, C & D: 20m	20m	20m
Boarding Bridges	4 (mobile)	None	None
Tidal Range	2m	2m	2m
Size	~110,000GT	120,000GT~	~110,000GT
Drive & Cruise	available	available (250 cars)	available
Photo			

4. Cruise Port Initiatives



■ Osanbashi Yokohama International Passenger Terminal



■ Berths

Length at both sides 450m

Depth 12-10m

Apron Width 20m

■ Terminal (Total Space)

Approx. 44,000m²

■ Access

○ 7 minute walk from Minatomirai

Line Nihon-ōdōri Station

○ 25 minute drive to Haneda

Airport

○ 90 minute drive to Narita

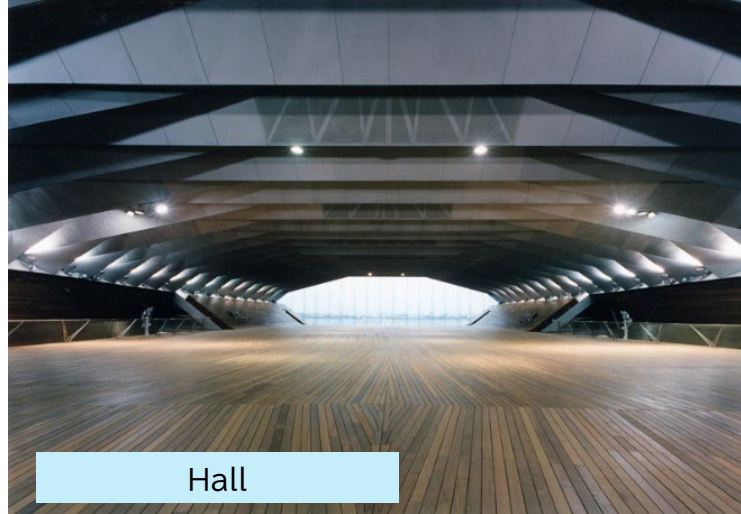
Airport

4. Cruise Port Initiatives

■ Osanbashi Passenger Terminal



Building



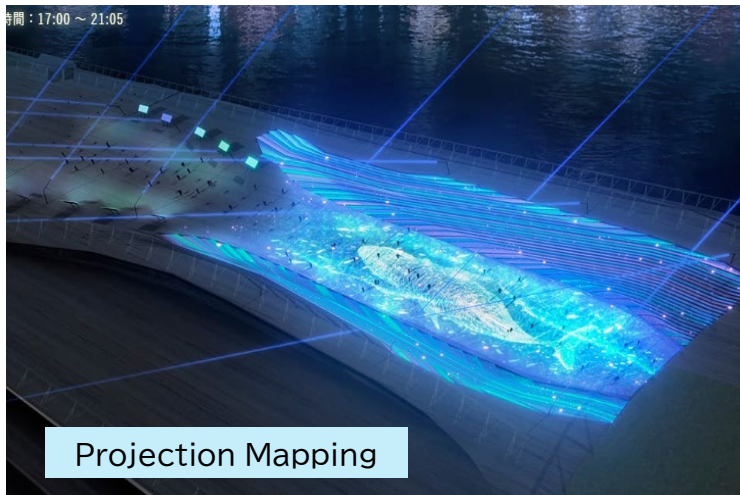
Hall



Rooftop



Transportation Plaza



Projection Mapping



Greeting Performance

4. Cruise Port Initiatives

■ Shinko Pier Cruise Terminal



■ Berth
Length 340m
Depth 9.5m
Apron Width 20m

■ Terminal (Total Space)
Approx. 4,200m²

■ Access
○ 10 minute walk from
Minatomirai Line Bashamichi
Station
○ 25 minute drive to Haneda
Airport
○ 90 minute drive to Narita
Airport

4. Cruise Port Initiatives

■ Shinko Pier Cruise Terminal

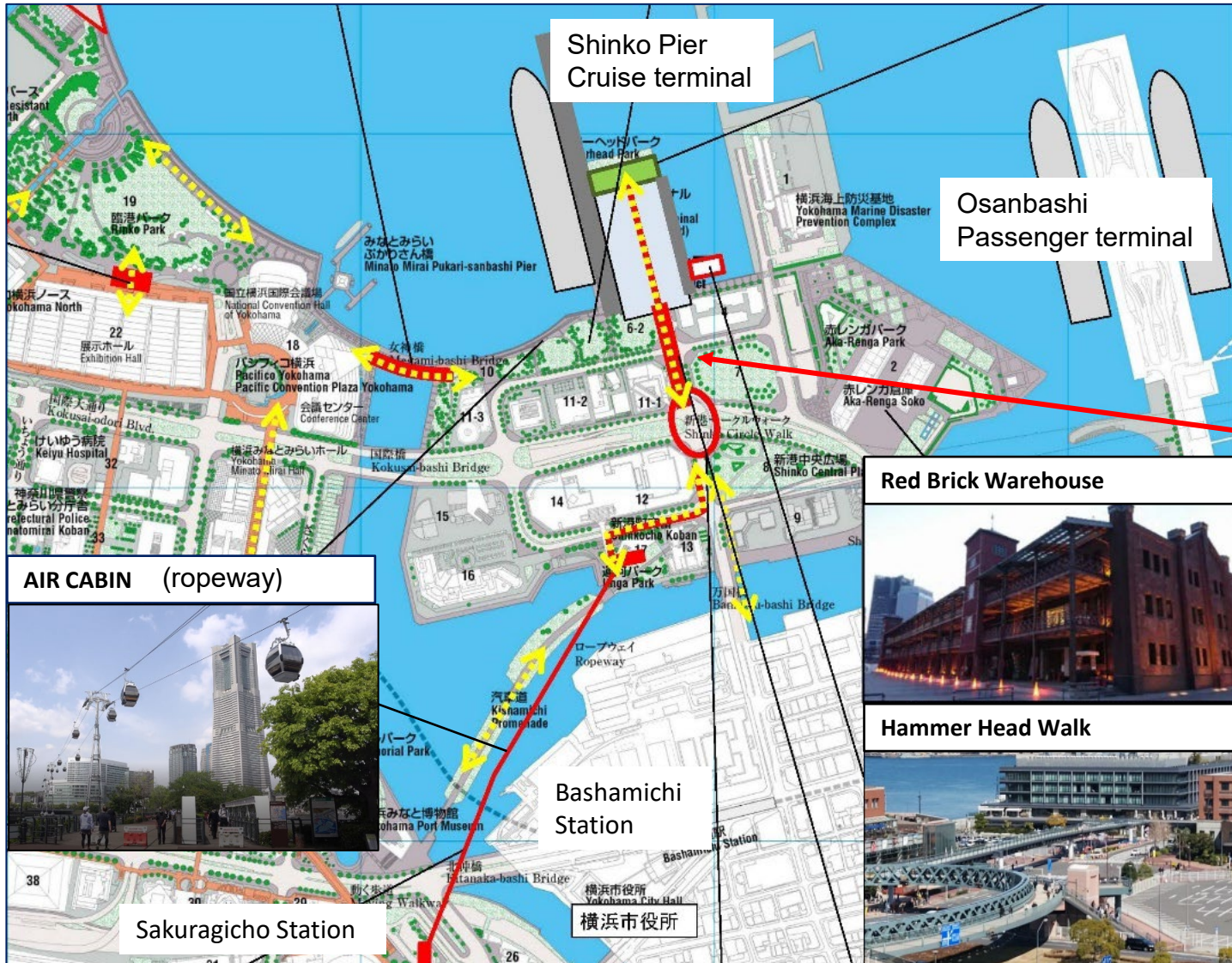


- Japan's first cruise terminal combined with a hotel and commercial facilities
- Adjacent to the historic “Hammerhead” Park
- *Welcoming luxury ships as a top-of-the-line resort*



- ▶ **On-site hotel and commercial facilities**
- ▶ **Located in the center of the downtown area.**
- ▶ **Hammerhead Crane:** Certificated as a Heritage of Industrial Modernization

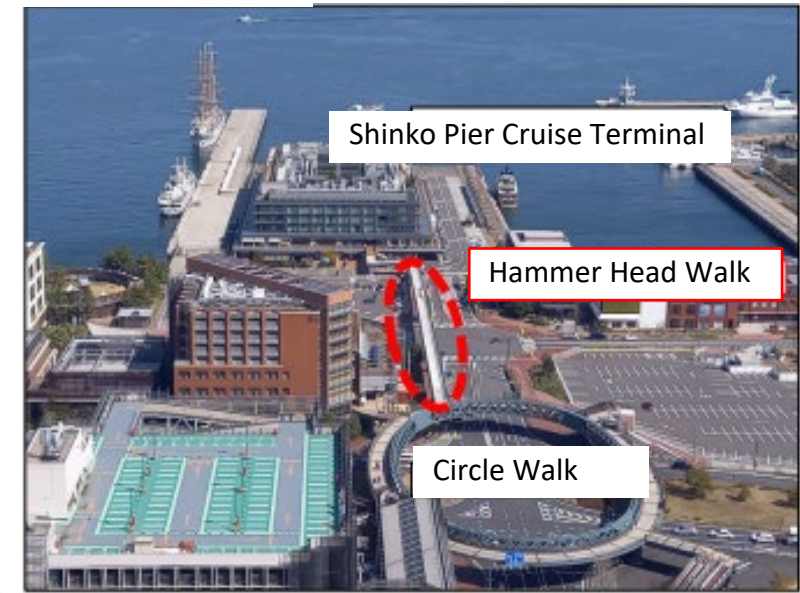
4. Cruise Port Initiatives



Easy Access to the Shinko Pier Terminal

- From Bashamichi Station (Approx.10min.)
Pedestrian deck (walk) ~ Terminal
- From Sakuragicho Station(Approx.15min.)
Ropeway ~ Pedestrian deck(walk)~ Terminal

From Above



Red Brick Warehouse



Hammer Head Walk



4. Cruise Port Initiatives

■ Daikoku Pier Cruise Terminal



■ Berths

Length P3-4: 290m / T3-6: 740m

Depth 12-11m

Apron Width 20m

D/W : 120,000GT

■ Terminal (Total Space)

Approx. 5,600m²

○ Site area: Approx. 50 Acres

■ Access

○ 15 minutes by taxi from
Minatomirai Line Motomachi-
Chūkagai Station

○ 20 minute drive to Haneda
Airport

○ 90 minute drive to Narita Airport

4. Cruise Port Initiatives

■ Daikoku Pier Cruise Terminal



- The only terminal in Japan that can handle two mega cruise ships simultaneously
- Huge area available for drive & cruise cars



Two mega cruise ships docking simultaneously



CIQ and waiting area:
three terminal buildings
each with an area
of 1,500m²



Parking Area
(Drive & Cruise)

MAX: 300 cars



5. Tourist Attractions

Beautiful skyline
welcomes ships

*The cityscape was
designed to look
beautiful from the sea.



Departure scene in
the evening



5. Tourist Attractions

Proximity to port and city

■ Walking distance to tourist attractions

*5 min.

□Red Brick Warehouse

□Yamashita Park □China Town

*10 min.

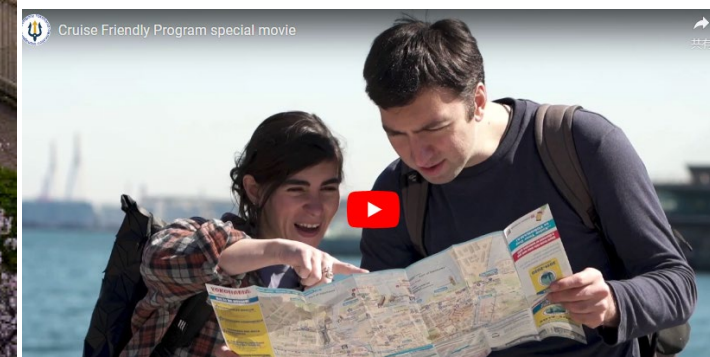
□Minato Mirai District

■ Cruise Friendly Program

* For **passengers and crews**

*Over 120 shopkeepers and leisure facilities are members

***Special services**; Discounts, Welcome gifts, Communication in English, Open early etc.



5. Tourist Attractions

Greeting & Farewell event

- Close distance between ship and terminal
- Visitors to the terminal can participate in welcoming and seeing off events.



5. Tourist Attractions

Luxury Hotels

- Many Foreign-affiliated hotels have opened near the cruise terminals.
- Pre- and post-cruise accommodations are available.



citadines



5. Tourist Attractions

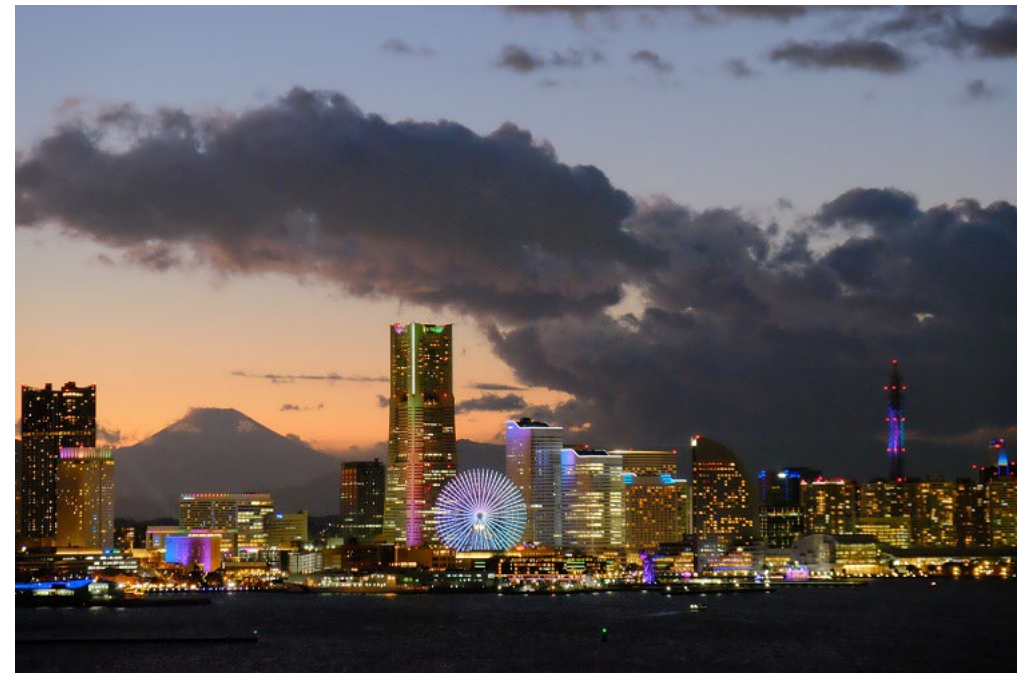
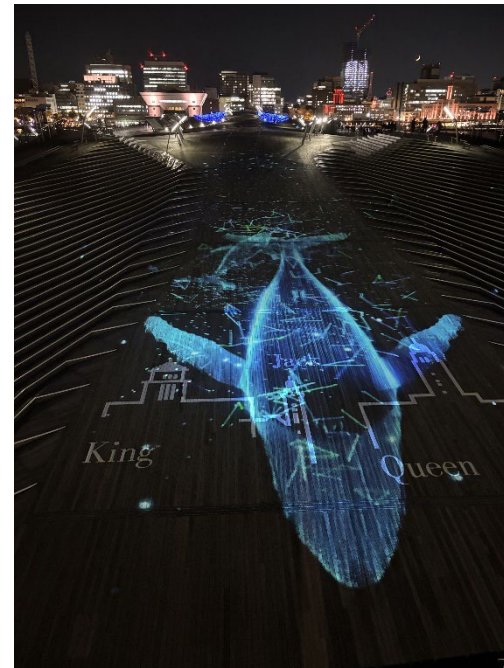
Night view & Fireworks

■ **Selected** as one of **Japan's Three Most Spectacular Night Views** in 2024.

■ **Fireworks** shot off around the port area on **weekends throughout the year**, including winter.

■ **Projection Mapping** held at Osanbashi Passengers Terminal.

Osanbashi
Passengers Terminal



5. Tourist Attractions ~Zen Temple and Japanese Garden~



Sankei-en

- one of the best traditional Japanese gardens



Okura Toen Ceramics

— one of the top ceramic producers in Japan, as well as the purveyor to the Imperial Household.



Hakusan Tokozenji Temple

— private Zen meditation workshop and a chat with the Zen Master.



Shomyoji Temple — established in the Kamakura Period (1258)

5. Tourist Attractions ~Local Food & Restaurants~



(C) Tetsuro Tanabe



Gyu-Nabe "Araiya"

— Yokohama-style Sukiyaki restaurant



Cup Noodle Museum

— studying the history of instant noodles



Noge District

— enjoy local beer and nightlife in a Japanese nostalgic atmosphere



Local Brewery

— tasting freshly brewed craft beer.



Chinatown

— the biggest Chinatown in east Asia with more than 600 shops/restaurants

5. Tourist Attraction ~ GREEN×EXPO 2027 ~



Main Theme Scenery of the Future for Happiness

Title	International Horticultural Expo 2027, Yokohama, Japan
Venue	Former Kamiseya Communications Facility (Yokohama City) Within 15minutes by car from waterfront area
Duration	19 March – 26 September 2027 (6 months)
Class	A1 (AIPH Approved & BIE Recognized)

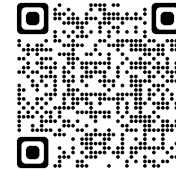
Japan Association for the International Horticultural Expo 2027, Yokohama

6. Tourist Info



Tourism Information

https://www.city.yokohama.lg.jp/lang/overseas/port/cruise/tourism_info.html



Yokohama Official Visitor's Guide

<https://www.yokohamajapan.com/>



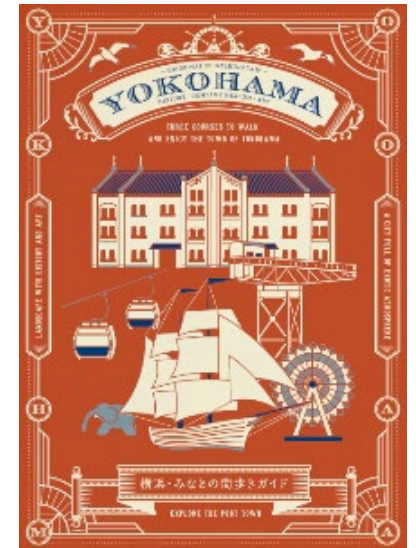
Yokohama Cruise Friendly Program

<https://yokohama.cruise-friendly.jp/>



Yokohama Port Town Walk Guide

https://www.city.yokohama.lg.jp/lang/overseas/port/cruise/tourism_info.files/yokohamaguidebook.pdf



**We look forward to your continued
patronage of the Port of Yokohama.**



**Information for Cruise
line companies**

