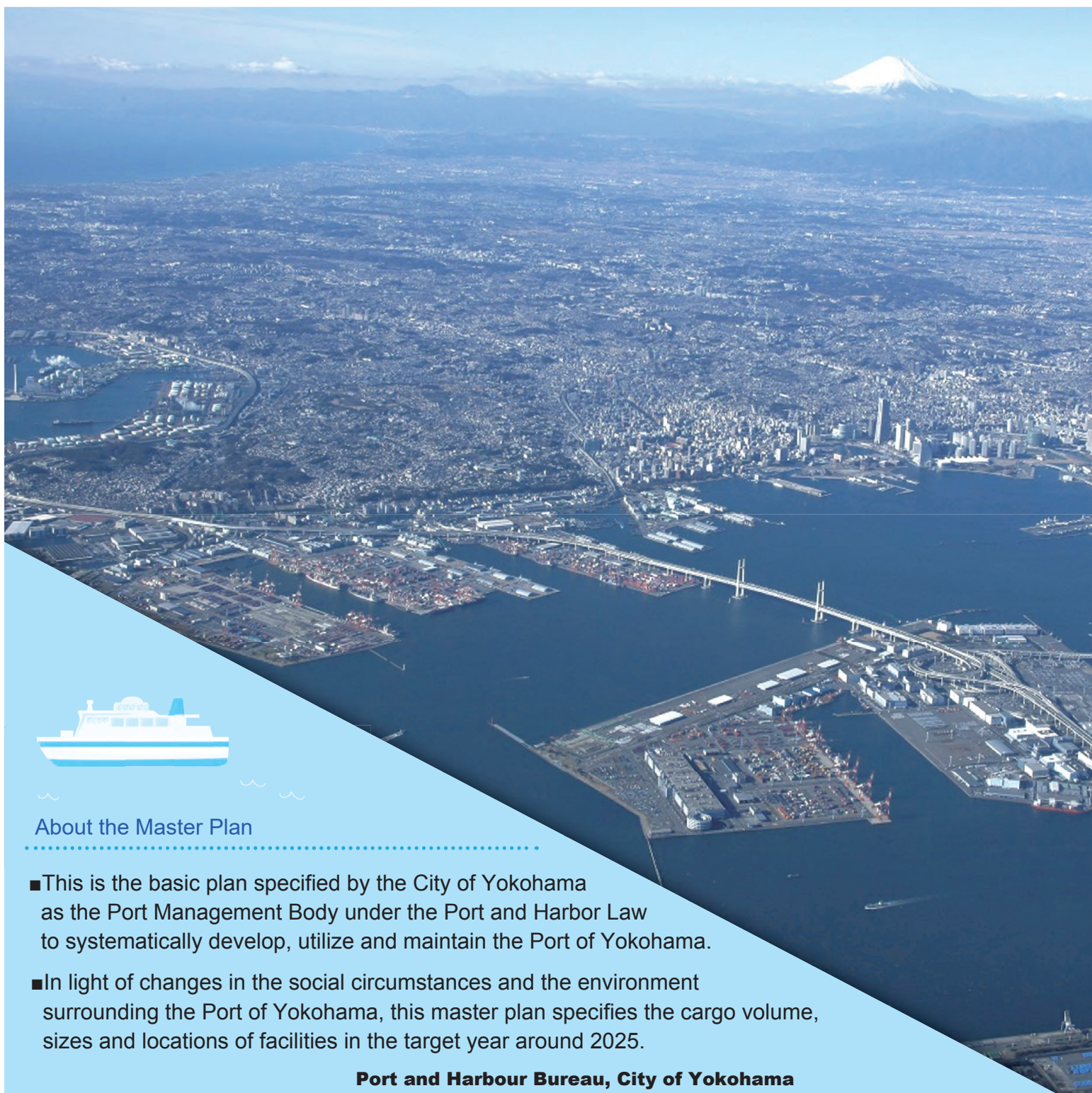


Master Plan of the Port of Yokohama



Revised in December 2014



About the Master Plan

- This is the basic plan specified by the City of Yokohama as the Port Management Body under the Port and Harbor Law to systematically develop, utilize and maintain the Port of Yokohama.
- In light of changes in the social circumstances and the environment surrounding the Port of Yokohama, this master plan specifies the cargo volume, sizes and locations of facilities in the target year around 2025.

Port and Harbour Bureau, City of Yokohama

Port planning policy

Under its three pillars: “Port with international competitiveness” , “Port for residents to socialize and relax” , and “Port considering security, safety and environment protection” , the Port of Yokohama will continue to create an integrated port that improves the economy and civic life in Yokohama.

1. Port with international competitiveness

- As a strategic international container port, the Port of Yokohama will precisely respond to the trends in the maritime industry that faces larger container ships and global cargo growth driven by Asian markets, and relocate and renovate container terminals as well as construct state-of-the-art facilities so as to maintain and expand main sea routes and further enhance short-sea shipping routes. Additionally, a logistics base in the coastal area will be built by planning a new pier that integrally allocates deep-water high-standard container terminals and logistics facility with advanced distribution processing functions.
- In order to efficiently handle not only finished cars which are one of Yokohama’ s main cargo, but also other general cargo besides containerized cargo, the Port will facilitate conversion and consolidation of functions of piers.
- In order to cope with the increase in port traffic, the cargo collection ability will be increased and smooth traffic among piers will be secured by connecting coastal roads to a wide-area road network.

2. Port for residents to socialize and relax

- As a Japan’ s leading cruise port, the Port will be ready to accommodate the increasing size of cruise vessels and create more bustle and activity.
- In recent years, logistics functions have been moved to the outer harbor. Reflecting the land use change, the inner harbor area will be transformed to a new vibrant hub.
- In order to provide public access for residents and visitors to the waterfront and meet the demand for marine recreation, construction of the public open waterfront will be facilitated and a unique and comfortable space will be created by using the characteristics of the area.

3. Port considering security, safety and environment protection

- As a base to support civic life and economic activities in the event of a disaster, a disaster-resistant port will be built by enhancing disaster preparedness of the port of Yokohama.
- In order to inherit the popular and beautiful port to our next generations, the environmental conservation initiatives will be promoted. This includes conserving greenery, improving water quality and promoting global warming countermeasures.

Major Update Process

2012

August 29 Yokohama Port and Harbor Council* 【 Revising process, etc.】

2013

October 29 Yokohama Port and Harbor Council 【Progress of deliberation, etc.】

November 11 to December 10 Carried out public hearings

2014

September 24 Yokohama Port and Harbor Council 【Revised plan】

November 14 Council for Transport Policy and Port and Harbor Subcommittee
for the Minister of Land, Infrastructure, Transport and Tourism*

December 15 Public Notice of the revised Master plan of the Port of Yokohama.



View of Honmoku-Pier

*Yokohama Port and Harbor Council is a council established by the City of Yokohama under the Port and Harbor Law to discuss important issues on port planning of the Port of Yokohama.

*Council for Transport Policy and Port and Harbor Subcommittee for the Minister of Land, Infrastructure, Transport and Tourism is a subcommittee of the council established by the Ministry of Land, Infrastructure, Transport and Tourism under the Ministry of National Land and Transportation Establishment Act to discuss important issues on the port sector.

Vision of the Port of Yokohama

1. Port with international competitiveness

- Planning public pier
- Planning port transport facilities
- Initiatives to realize a strategic international container port



Minami Honmoku Pier under state-of-the-art facility construction

2. Port for residents to socialize and relax

- Planning passenger cruise terminals
- Redeveloping Yamashita Pier
- Creating vibrant atmospheres in the coastal area



Zou-no-Hana Park with the cruise ship crowds (Courtesy of Port of Yokohama Promotion)

Integrated port planning that improves the economy and civic life in Yokohama

- ## 3. Port considering security, safety and environment protection
- Countermeasure facilities against large-scale earthquakes
 - Environmental protection
 - Planning "Smart" Port



Umino Koen (Marine Park) Restoration of eelgrass bed

Cargo Volume Target



Image of Container terminal

■ Cargo volumes in the target year (around 2025)

	Volume of cargo handled	Container cargo volume
Foreign Cargo	119,7 million tons	72,5 million tons (4.7million TEU)
Domestic Cargo	47,6 million tons	5,3 million tons (0.5 million TEU)
Total	167,3 million tons	77,8 million tons (5.2million TEU)

※Estimates are targeted at 2025

※TEU : Twenty-foot Equivalent Unit, the Industry standard measure of container capacity.

1. Port with international competitiveness

■ Planning public pier

As a Japan's leading international trade port, Port of Yokohama will support civic life and Japan's economy.

Container Terminals

- While giving due consideration to trends in international maritime trade and users' needs, the Port will continue to accommodate the increasing size of container ships and cargo volume.
- By facilitating construction of state-of-the-art facilities and relocation of existing facilities, container handling functions will be strengthened.
[Minami Honmoku Pier, Honmoku BC Terminal]
- A new pier off Honmoku will be developed and deep-water high-standard container terminals and logistics facility will be integrally allocated in the pier. [New Honmoku Pier]



Image of Shin-Honmoku Pier

General Cargo Terminals

- Functional changes and reinforcement of piers will be facilitated so as to efficiently handle general cargo including finished cars which are Yokohama's main cargo.
[Daikoku Pier, Honmoku Pier]



Pure car carriers at Daikoku Pier

■ Planning port transport facilities

《By smoothly connecting the Port to a wide-area road network, logistics functions will be improved. 》
While a wide-area road network has been established, links among the piers will be strengthened and traffic flow to the downtown area will be curbed so as to smoothly control distribution traffic that will occur continuously in the future.

■ Initiatives to realize a strategic international container port

《Combined hard and soft measures will be developed. 》
The integrated measures will be unitedly tackled by public and private sectors to promote creation of a user-friendly port in both hard and soft aspects.

■ Development of cargo collection measures

Opening of a new shipping route and improvement of existing routes, Support for private-sector operators to collect cargo including promoting usage of coastal feeder and railway services, Enhancement of logistics functions

■ Cost reduction of port charges

Strategic and flexible lease rate setting, Initiative toward reduction of drayage charges

■ Development of convenience improvement measures

Promoting integral use of the facilities, Promoting IT adoption, Improving land transport efficiency

■ Conducting strategic port sales promotion

Strategic port sales promotion for shipping companies and shippers in and abroad

■ Improvement of working environment

Initiatives to improve workplace environment including enhancement of commuting convenience for port workers



Logistics facility, Yokohama Port Cargo Center (Daikoku Pier)

2. Port for residents to socialize and relax

Planning passenger cruise terminals

«As a Japan's marine gateway, the Port welcomes a large number of guests.»

As a Japan's premier cruise port, the capability to accommodate cruise ships will be increased. Honmoku Pier will accommodate ultra-large ships that can't pass under the Yokohama Bay Bridge.

[Osanbashi Pier, Shinko Pier, Honmoku Pier]



Cruise ship departure ceremony



Large passenger ship at Osanbashi Pier

Redeveloping Yamashita Pier

«Redevelopment will be carried out to strengthen urban waterfront functions.»

Logistics-oriented land use will be reviewed and a new vibrant hub will be formed by taking advantage of its excellent location near downtown.

By changing the land use, the area will introduce a large-scale customer-drawing facility as well as green spaces and promenades that expand and connect to Yamashita Park.



View of Yamashita Pier

Creating vibrant atmospheres in the coastal area

«A world-class waterfront will be created.»

Mainly to revitalize recreational water areas, the Port will enhance water transport and sightseeing boats as well as promote various water-based recreation activities and events including canoeing and sea kayaking.

By reinforcing use of coastal green spaces and migration to peripheral facilities, integral use of water areas and green spaces will produce a synergistic effect and newly create bustle and activity in the area.



View of Shinko district



Yokohama Bayside Marina

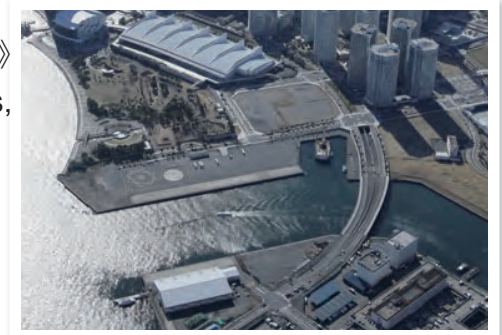


Events at Akarenga Park and on the water

3. Port considering security, safety and environment protection

Countermeasure facilities against large-scale earthquakes

《The port protects citizens' lives and safety in the event of a disaster.》
As a base for maritime transportation function for emergency supplies, quake-resistant quays will be properly arranged.
In order to maintain international logistics functions after a disaster, the berths with alongside depth of over 16 meters which can accommodate large container ships will be earthquake resistant.



Quake-resistant quay in the inner harbor

Environmental protection

《Environment of the popular and beautiful Port of Yokohama will be inherited to our next generations. 》
In collaboration with residents and companies, the Port will continue to cope with various initiatives. These include; conserving greenery, improving water quality and promoting global warming countermeasures. A biodiversity-friendly waterside environment will be created mainly in the zone to improve or conserve natural environment by cultivating seaweed beds and restoring eelgrass beds.
[Inner harbor area, Kanazawa area]



View of Rinko Park



Water quality improving initiatives
'Yume Wakame Workshop'



Eelgrass bed,
Umino Koen (Marine Park)

Planning "Smart" Port

The "Smart port" will be facilitated by installing a collective power receiving system to piers, introducing solar power generation and storage batteries as well as building energy management systems so as to secure business continuity in the event of a disaster.



LED lighting in the terminal



Eco-friendly tug boat (hybrid ship)