

	995		398		Q4
--	-----	--	-----	--	----

				2,200	H2	H20	H18	H20	13,955.0	549.0	549.0	0	549.0
					H20	H20	H20	H20	15.0	15.0	15.0	0	15.0
					H20	H20	H20	H20	15.0	15.0	15.0	0	15.0
					H16	H20	H16	H20	326.0	326.0	326.0	0	326.0
				1,950	H16	H20	H16	H20	83.0	83.0	83.0	0	83.0
									14,394.0	988.0	988.0	0	988.0

...A

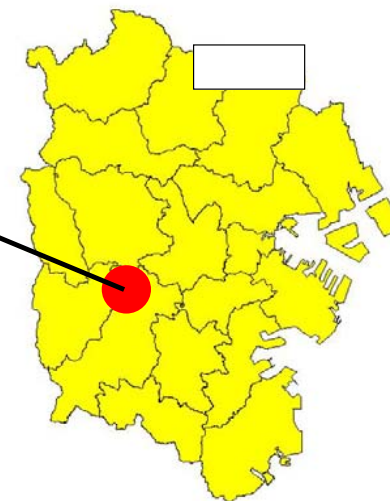
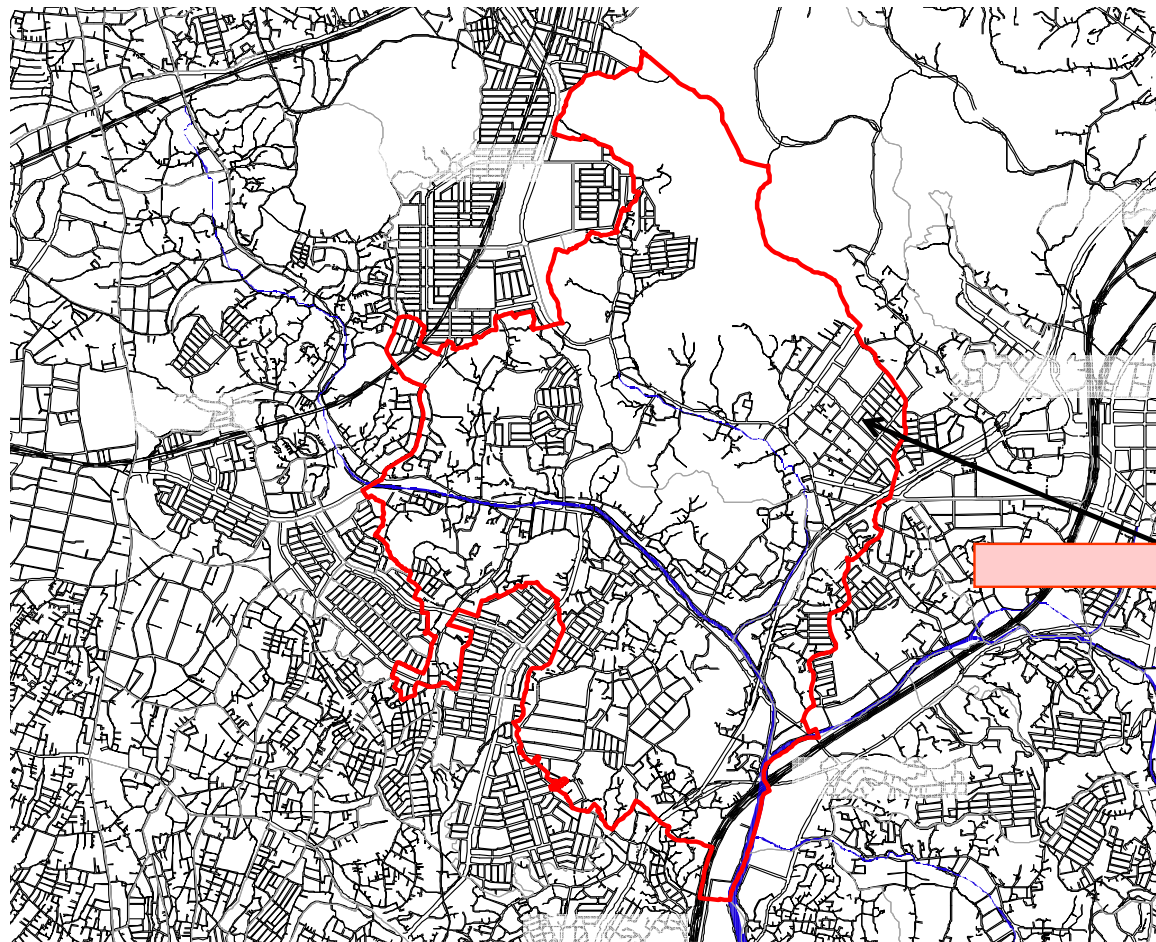
													0
													0
													0
					H20	H20	H20	H20	6.0	6.0	6.0	0	6.0
													0
					15	H20	H18	H20	1.0	1.0	1.0	0	1.0
													0
													0
													0
													0
									7.0	7.0	7.0	0	7.0

...B

(A+B) 995.0

c

656 ha



ha

