

To Do! From Three Points of View



Deployment of Energy Policies

- Understanding the local energy supply and demand
- Promotion of energy management in regions
- Transition to a low-carbon society in the transport field by electric cars, etc
- Utilization of unused energy such as waste heat from plants and ocean energy, and networking of thermal usage



Development of the Environment and Energy Industry

- Matching companies' technologies and products that contribute to the environment
- Support for manufacturers in the city in the technology and product development that contributes to the transition to a low carbon society
- Promotion of energy saving in manufacturing processes
- Promotion of approaches against global warming as new business field



Creation of Environmental Education Base

- Environmental education business under collaboration with universities in the city
- Utilization of natural environment-related facilities and social infrastructure and environmental facilities for visits and inspections
- Deployment of environmental educational programs

[Terminology]

Energy management – To achieve a long-term energy saving by optimizing the use of energy by understanding the usage

Natural environment-related facilities – Parks, green areas and seashore with rich natural environment

Social infrastructure and environmental facilities – renewable energy facilities, such as a solar power generation system, and public facilities related to the environment, including sewage treatment plants

Environmental educational programs – Measures to encourage environmental actions, such as the Yokohama Green Valley Environmental Map (tentative name) and the Environmental Point Rally

In Implementing Yokohama Green Valley



Fumiko Hayashi,
Mayor, City of Yokohama

“Promotion of further approaches against environmental issues” is one of the five directions of the municipal government of the City of Yokohama. In particular, we have announced that practical application and research and development of environmental technologies will be addressed so they will lead to economical vitalization.

The first concrete approach is this Yokohama Green Valley concept.

Since global warming has become an urgent issue for us, I believe that a wealthy life and new business opportunities will be created by providing excellent ideas and bringing out the ability to take action from citizens, business owners, universities and Yokohama municipal government.

Yokohama that leaves sustainable global environment to children who will bear the next generation, and that leads Japan and the world by environmental businesses will be made from this Yokohama Green Valley.



A comfortable eco life is realized.

A new environmental business blossoms.

Children are grown up to live with the environment.

Such projects start from Kanazawa ward.



City of Yokohama's Effort against Global Warming

The city of Yokohama has been taking measures against global warming under a high target, cutting down greenhouse gas emissions over 25% by fiscal year 2020 and over 80% by fiscal year 2050, (compared with 1990 levels).

The city has been striving to deploy measures to create a low carbon metropolitan model that utilizes the "power of the citizens".

What is Yokohama Green Valley?

Yokohama Green Valley is a concept to rapidly promote a reduction of greenhouse gas and economical vitalization by working to develop an industry from the aspect of "environment" and to improve environmental education through collaboration with citizens, using the city's coastal area as a model.

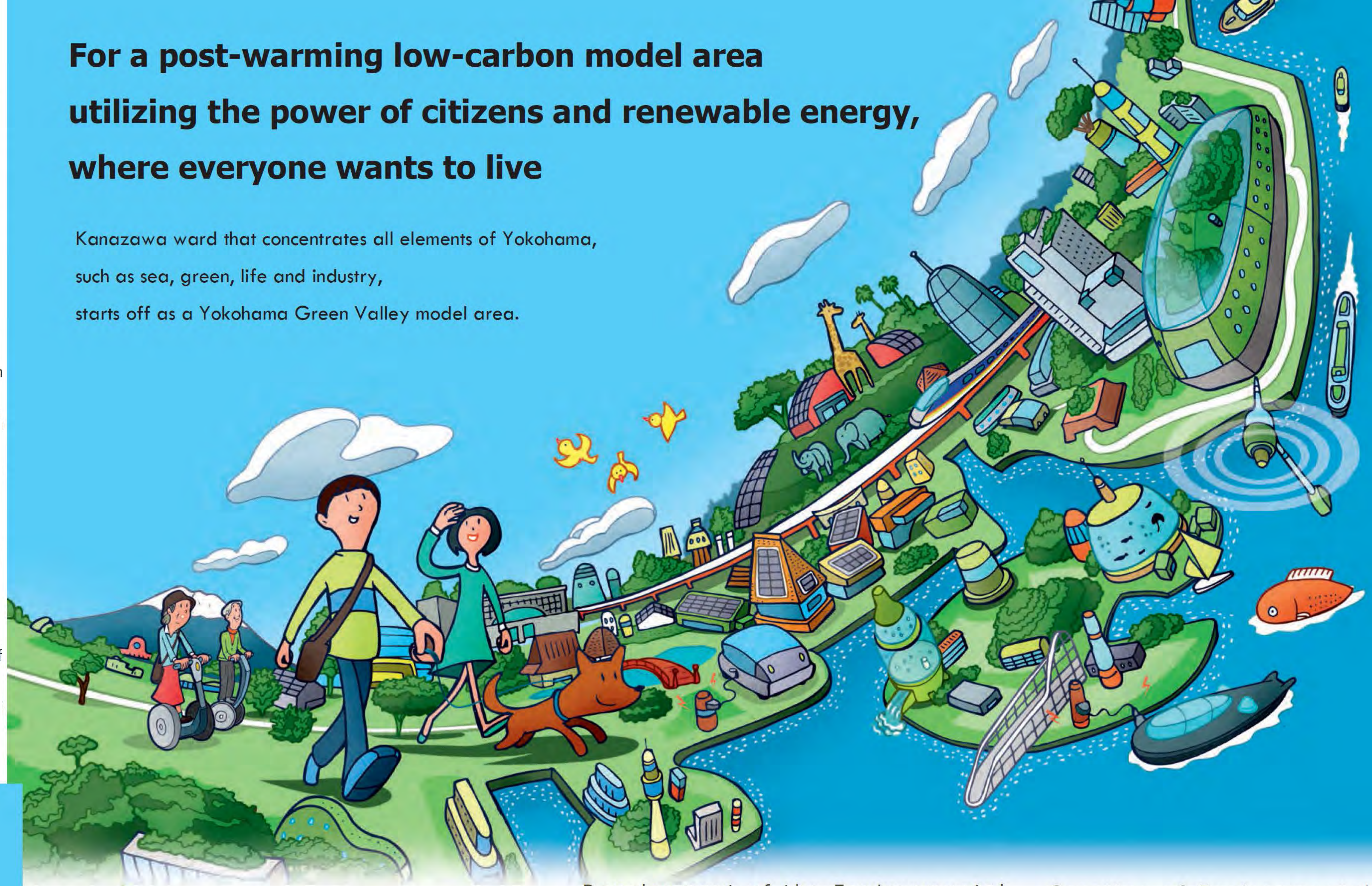
The City of Yokohama aims to be recognized as Japan's Low Carbon Eco-Model City, in reality and in name, in the future by deploying activities carried out under this concept to the whole city.

The Model Area, Kanazawa Ward

Of all areas in the City of Yokohama, the approach will start from "Kanazawa ward" which has all elements of "Yokohama", such as residential estate, industrial estate, public facilities, green spaces and sea in a compact area.

For a post-warming low-carbon model area utilizing the power of citizens and renewable energy, where everyone wants to live

Kanazawa ward that concentrates all elements of Yokohama, such as sea, green, life and industry, starts off as a Yokohama Green Valley model area.



Future Vision of Yokohama

Short-Term
2010-2015

Putting Ultimate Low-Carbon Life in Practice

- Energy-saving actions and active introduction of renewable energy are promoted by the approaches of civic education and concrete projects.

Mid-Term
2016-2024

- Although it is partial, approaches such as mutual energy utilization in blocks will start, further promoting the transition to a low-carbon society.

Long-Term
2025-2050

- Renewable energy will be widely spread and mutual energy utilization in larger areas will increase, realizing an ultimate low-carbon area where energy is locally produced for local consumption.

Development of the Environmental and Energy Industry that the World Requires

- One or two cases of corporate collaboration or industry-university collaboration will be achieved and transition to an environmental business will partially start.

- Many collaboration cases will be achieved, and companies or universities will voluntarily and actively deploy operation or collaboration.
- The area will start attracting attention from outside the prefecture or the country.

- The area will become a large base of the environmental and energy industry and each company will realize sustainable development by collaboration or business transfer according to the time

Creation of Environmental Education Base that Represents Japan

- Various environmental educational programs will be created, including delivery lectures and educational trips organized by universities or private companies for citizens.

- Environmental consciousness of people living and working in the area will increase through education for children and inspections by companies, and more environmentally-friendly activities will take place..

- The area will become a base of environmental education that receives many inspections from inside and outside the country.
- All citizens and business owners will be environmentally-conscious by deploying the success of the Yokohama Green Valley to the overall city.