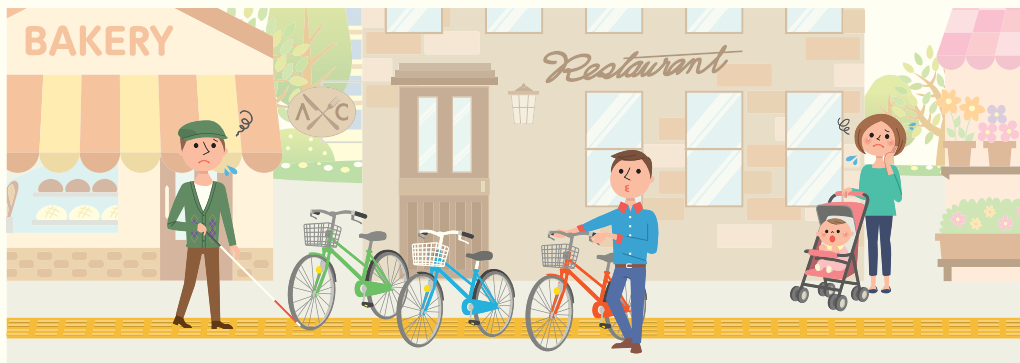


Even if only for a short time, park in a bicycle parking lot  
(a place to park bicycles)

Don't park the bicycle along the road or in public squares!



Even if it is only for a short time, it is in the way of people walking by and shops. Cars will also have trouble getting around.



Sign showing  
"bicycle-free area"

The City of Yokohama has established the area around stations where everyone can pass through as a "bicycle-free area" (where bicycles cannot be parked). Bicycles and motorcycles that are parked in prohibited areas will be moved to a storage location.

※You will have to pay to get the bicycle returned.

The City's bicycle parking lot locations can be found on the City's website (Japanese only).  
<https://www.city.yokohama.lg.jp/kurashi/machizukuri-kankyo/kotsu/bicycle/bicycle-parking/search/>



## Let's have fun safely using bicycles.

Based on the "Yokohama City Bicycle Use Promotion Plan," Yokohama promotes policies so that everyone can enjoy riding bicycles safely.



### Be Considerate and SHARE THE ROAD Campaign

We are working to ensure that bicycles can safely use the roads.

Yokohama City Bicycle Use Information Site  
Information about cycling events can be found on this site (Japanese only).



Issued by: Yokohama City Road and Highway Bureau, Traffic Safety and Bicycle Policy Division 2021.3

TEL: 045-671-2323 FAX: 045-663-6868

Let's Have Fun Safely Riding Around Yokohama!

# Bicycle Rule Basics

〈English〉



## Before getting on your bicycle, get insurance!

According to the laws of Kanagawa Prefecture, you must have insurance that will cover the costs when you injure someone while riding your bicycle.

There was an accident where a bicycle rider had to pay the injured person a large sum of money totaling 95.2 million yen.

Be sure to get insurance.

