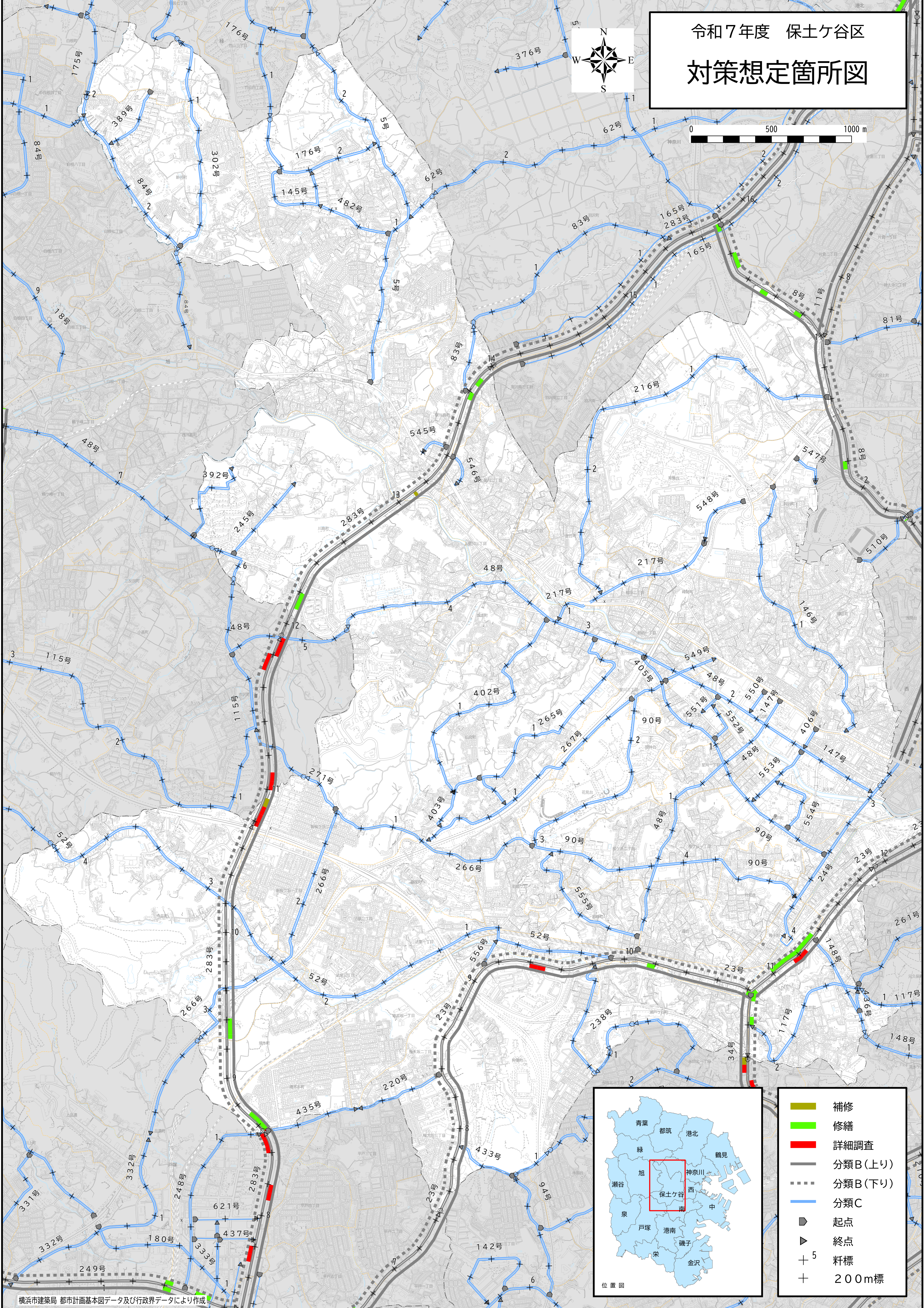
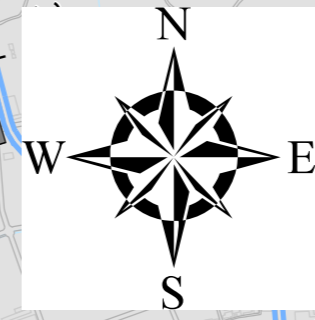


令和7年度 保土ヶ谷区 対策想定箇所図



- 補修 (Maintenance)
- 修繕 (Repair)
- 詳細調査 (Detailed Investigation)
- 分類B(上り) (Classification B (Up))
- 分類B(下り) (Classification B (Down))
- 分類C (Classification C)
- 起点 (Start Point)
- 終点 (End Point)
- 5 杆標 (5m Stake)
- 200m標 (200m Stake)