

## Yokohama City's initiatives in the field of medical care

Yokohama is one of the international trading ports that was opened 160 years ago when Japan first opened up to the world. It is a city that adopts a forward-looking attitude and actively seeks to incorporate new things. The same applies to the medical field. Through popular designs, Yokohama City is putting effort into publicizing the healthcare sector in collaboration with the private sector, in order to encourage the public to take greater interest in the medical field. This initiative is titled "The Medical Perspective Project (Iryo-no-Shiten)". More than 100,000 foreign residents now live in Yokohama. One of our important goals is to ensure that these foreign residents can receive medical treatment with peace of mind. This leaflet is also a part of this new initiative.

## Yokohama city × MSD K.K. Cooperation

MSD K.K. is a pharmaceutical company that is constantly tackling the challenge of discovering, developing, and providing innovative pharmaceuticals and vaccines. It is also engaged in efforts to disseminate accurate medical knowledge through a medical reference titled "MSD Manual." The company shares the vision of "The Medical Perspective Project (Iryo-no-Shiten)", and is cooperating with Yokohama City on the initiative.



Click here for the online PDF  
(Japanese/English)



12 languages \*

English	Chinese	Korean	Spanish	Portuguese	Tagalog
Nepeali	Vietnamese	Thai	Cantonese	Russian	Ukrainian

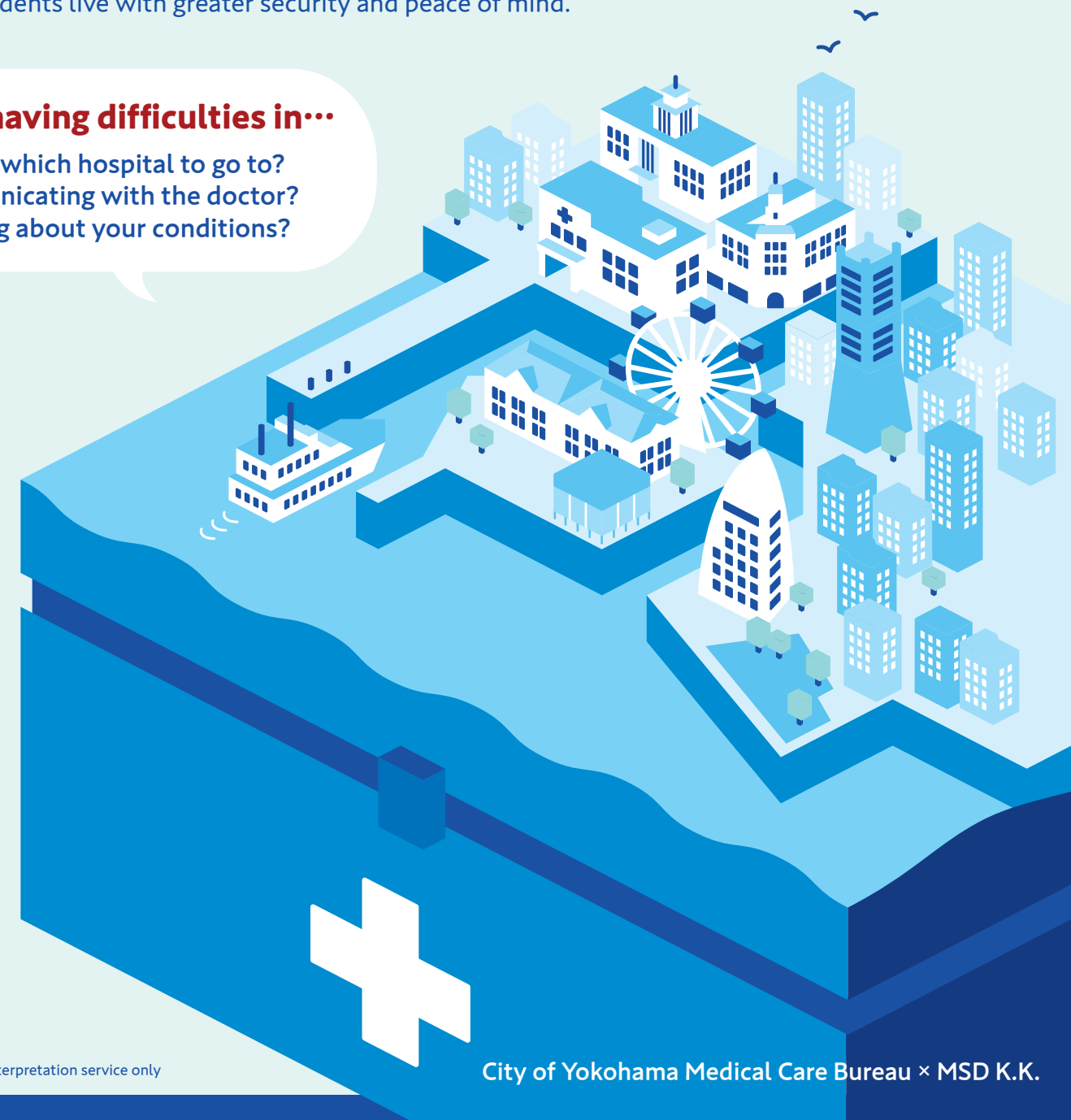
## Medical information service

# YOKOHAMA MEDICAL GUIDE

Yokohama is an attractive city that is comfortable to live in, has many sightseeing spots, and offers a taste of both the old and the new. Through an initiative titled "The Medical Perspective Project (Iryo-no-Shiten)", Yokohama City is disseminating multilingual medical information to help foreign residents live with greater security and peace of mind.

## Are you having difficulties in...

- ① Finding which hospital to go to?
- ② Communicating with the doctor?
- ③ Learning about your conditions?



# 1 I don't feel well. What should I do? Which hospital should I go to?



- ◆ Emergency hospital  
During an emergency illness or injury, anyone can call for an ambulance.

## Call 119

- State that it is an emergency
- Provide the address to be picked up
- Tell the symptoms
- Provide your name and contact details



- ◆ Flow of consultation at the hospital

For safe travels in Japan

Search



Guide for when you are feeling ill (Japan Tourism Agency)

- ◆ Multilingual Medical Questionnaire

Multilingual Medical Questionnaire

Search



produced by NPO International Community Hearty Konandai and Kanagawa International Foundation

# 2 I don't understand what the doctor is saying. I would like to hear an explanation in my native language.



## Phone medical interpretation service

Yokohama City offers a multilingual medical interpretation service by phone at certain hospitals, nighttime emergency centers, and holiday emergency clinics. This service helps foreign patients receive consultations at medical institutions with peace of mind.

- ◆ Supported languages

12languages

English,Chinese,Korean,Spanish,Portuguese,Tagalog,Nepeali,Vietnamese,Thai,  
Cantonese,Russian,Ukrainian

- ◆ Availability

8:00~20:00

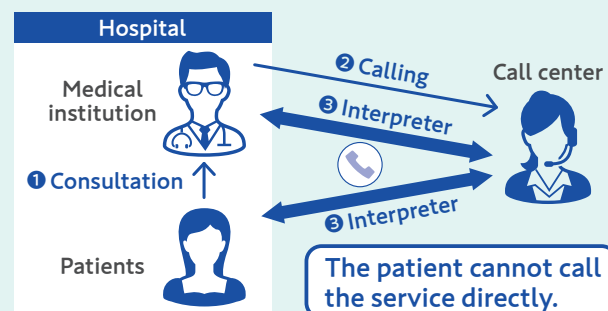
\*Only available during the opening hours of the medical institution.

- ◆ Medical institutions where the service is available

\*Please check the Yokohama City website.



The medical institution calls the interpretation service on behalf of the patient.



This service is offered by Yokohama City only.

# 3 I want to learn about my symptoms. Is there a simple way to look them up?



- ◆ Symptoms · Diseases · First aid ...  
Medical information (free)

## The Trusted Provider of Medical Information since 1899

The MSD Manuals are a comprehensive medical information source covering thousands of topics in all fields of medicine. They are offered as a free public service.

[www.msdmanuals.com](http://www.msdmanuals.com)

FREE!

11 languages available

<b>11 languages switchable</b> 	<b>English</b> To check for illness and symptoms 	<b>中文</b> 检查疾病和症状 	<b>한국어</b> 질병이나 증상을 확인하려면 
<b>Русский</b> Чтобы проверить болезнь и симптомы 	<b>日本語</b> 病気や症状を調べるには 	<b>Español</b> Para verificar enfermedades y síntomas 	<b>Português</b> Para verificar doenças e sintomas 
<b>Français</b> Pour vérifier la maladie et les symptômes 	<b>Deutsch</b> Krankheit und Symptome zu überprüfen 	<b>Italiano</b> Per controllare malattie e sintomi 	<b>عربي</b> للتحقق من طبيعة المرض والأعراض 

**MSD MANUAL**  
Consumer Version

**DISCLAIMER**  
Important: The authors, reviewers, and editors of this material have made extensive efforts to ensure that treatments, drugs, and discussions about medical practice are accurate and conform to the standards accepted at the time of publication. However, constant changes in information resulting from continuing research and clinical experience, reasonable differences in opinions among authorities, unique aspects of individual clinical situations, and the possibility of human error in preparing such an extensive text mean that other sources of medical information may differ from the information on this site. The information on this site is not intended to be professional advice and is not intended to replace personal consultation with a qualified physician, pharmacist, or other health care professional. The reader should not disregard medical advice or delay seeking it because of something found on this site.