



Yokohama Municipal Transportation supports the daily lives of Yokohama's citizens

Yokohama has developed as a modern city after the Port of Yokohama was opened to the world in 1859. Yokohama Municipal Transportation began operations with trams in April 1921, and municipal bus service started 1928.

In order to improve road congestion caused by economic growth, the tram was discontinued, and the Yokohama Municipal Subway Blue Line commenced operations as an urban railway service in 1972. The Yokohama Municipal Subway Green Line opened in 2008.

These Yokohama Municipal Transportation services have developed as Yokohama has grown as a city, and are used by around 829,000 passengers (*1) every day.

We will keep striving to provide high standards of safe, punctual, and comfortable transportation services, and enhance our organizational capabilities to ensure that all passengers are fully satisfied.

(*1: Calculated in fiscal year 2021)

City Populations in Japan (As of January 1st 2021)

| | | | |
|---|----------------|---------------|--------------------------------|
| 1 | Tokyo Pref. | Special Wards | Approximately 9,721,000 people |
| 2 | Kanagawa Pref. | Yokohama City | Approximately 3,776,000 people |
| 3 | Osaka Pref. | Osaka City | Approximately 2,755,000 people |
| 4 | Aichi Pref. | Nagoya City | Approximately 2,332,000 people |
| 5 | Hokkaido Pref. | Sapporo City | Approximately 1,973,000 people |

Source: City of Yokohama Statistics Portal Site, Estimated Populations of Major Cities

Transportation Statistics (Calculated in fiscal year 2021)

| | | Number of vehicles in service | | Total distance of operations | | Passenger revenue (excl. tax) | | Number of passengers | |
|--------------|-----------------|-------------------------------|----------------------------|------------------------------|----------------------|-------------------------------|--------------------------|---------------------------|------------------------------------|
| | | Annual (vehicles) | Average per day (vehicles) | Annual (km) | Average per day (km) | Annual (¥1,000) | Average per day (¥1,000) | Annual (1,000 Passengers) | Average per day (1,000 Passengers) |
| Bus | Public Service | 232,383 | 637 | 26,282,300.4 | 72,006.3 | 16,775,702 | 45,961 | 105,711 | 290 |
| | Charter Service | 10,654 | 29 | 628,508.0 | 1,721.9 | 438,155 | 1,200 | 2,191 | 6 |
| Bus Total | | 243,037 | 666 | 26,910,808.4 | 73,728.2 | 17,213,857 | 47,161 | 107,902 | 296 |
| Subway | Blue Line | 70,410 | 193 | 30,486,948.6 | 83,525.8 | 26,722,334 | 73,212 | 160,015 | 438 |
| | Green Line | 19,096 | 52 | 6,472,177.2 | 17,732.0 | 5,842,375 | 16,007 | 42,438 | 116 |
| Subway Total | | 89,506 | 245 | 36,959,125.8 | 101,257.8 | 32,564,709 | 89,219 | 194,477 | 533 |
| Total | | — | — | — | — | 49,778,566 | 136,380 | 302,379 | 829 |

* When transferring the Blue Line and Green Line the subway passengers are counted as one passenger, so the number of subway passengers does not match the total number of passengers on each line.



Municipal Bus Service

Outline of Bus Service

The operation network of the municipal bus service focuses on the central area of the city, and has connectivity with railway stations to create a broad transportation network. Municipal bus service has undergone improvements to fit citizens' needs, including revisions of bus routes in accordance with transportation demand and new road construction. Accordingly, the ridership of municipal buses is a daily average of around 300,000 people.

The City also has special bus routes for tourists such as “Akai Kutsu.” “Akai Kutsu” buses have a nostalgic retro design, and tour around sightseeing spots in the Yokohama Bay area. Other examples of special tourism buses include “BAYSIDE BLUE.”



As of March 31st, 2022

| | Overview of Municipal Bus Service | |
|------------------------------|---------------------------------------|---------------|
| Total Kilometers Covered | 516.3 km | |
| Number of Routes | 141 | |
| Average Route Length | 7.0 km | |
| Number of Bus Stops | 1,269 | |
| Number of Buses Owned | 795 | |
| Number of Buses in Operation | Average of 637 buses per day | |
| Kilometers Covered | Average of 70,000 km per day | |
| Number of Passengers | Average of 300,000 passengers per day | |
| Fares* | Adult | Cash/IC: ¥220 |
| | Children | Cash/IC: ¥110 |

* Fixed sum per route. Excluding special routes.



▲ Akai Kutsu



▲ BAYSIDE BLUE



Municipal Subway Service

Outline of Subway Service

The Municipal Subway plays an important role as a foundation for creating a vibrant city, and connects the city center with outlying areas. The daily ridership has grown to approximately 530,000.

The Blue Line (Yokohama Municipal Urban Railway Lines No. 1 and No. 3) has been extended since operations were started in December 1972. It currently consists of an entire length of 40.4 km between Azamino Station and Shonandai Station, and cooperates with fixed-route bus services and other railway lines operated by private companies to form a wide-area transportation network that plays an enormous role in the development of the city as a major means of transportation for Yokohama.

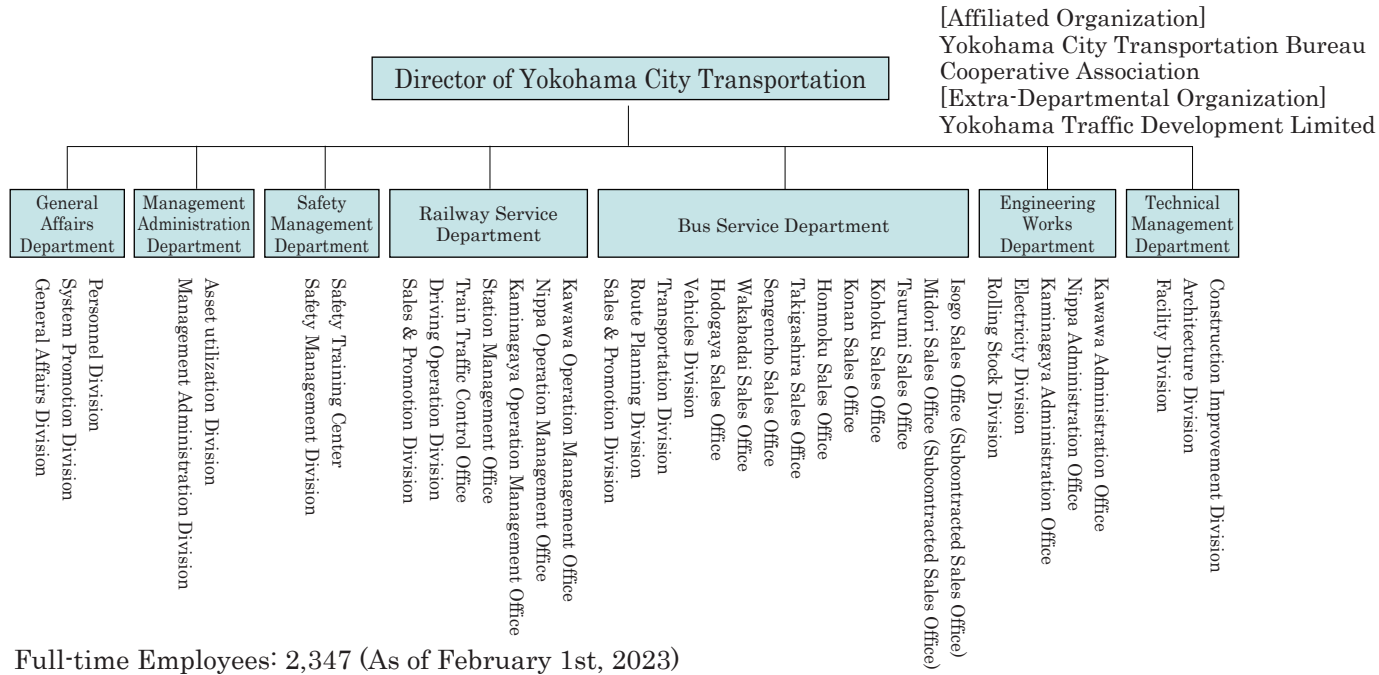
In addition, operation of the Green Line (Yokohama Municipal Urban Railway Line No.4), which runs east and west through the northern part of Yokohama, started in March 2008. This line spans 13 km and runs from Nakayama Station to Hiyoshi Station while connecting with the Blue Line at Center Minami Station/Center Kita Station, and has drastically improved access to central Tokyo and northern residential area of Yokohama.



As of March 31st, 2023

| | | Blue Line | Green Line |
|--|--------------|---|--|
| Area Covered | | Azamino - Shonandai | Nakayama - Hiyoshi |
| Kilometers Covered | | 40.4 km | 13.0 km |
| Number of Stations (Number of aboveground stations) | | 32 stations (5 stations) | 10 stations (3 stations) Center Kita and Center Minami use the same station |
| Time Required | | 68 minutes (60 minutes on the rapid train) * Excluding rush hour | 21 minutes |
| Weekday Operation Frequency | Morning Rush | 4 minutes 40 seconds | 3 minutes 30 seconds |
| | Daytime | 9 minutes 15 seconds - 11 minutes | 10 minutes |
| | Evening Rush | 6 minutes | 6 minutes |
| Number of Cars Per Train | | 6 | 4 , 6 |
| Types of Rolling stock | | 3000-series (A, N, R, S, V), 4000-series | 10000 series |
| Number of Cars Owned | | 222 Cars(6 cars × 37 trains) | 74 Cars(4 cars × 14 trains, 6 cars × 3 trains) |
| Depot | | Kaminagaya Depot, Nippa Depot | Kawawa Depot |
| Fares | | Adult Cash: ¥210 - 560 IC: ¥210 - 555 Children Cash: ¥110 - 280 IC: ¥105 - 277 | |

Organizational Chart (As of April 1st, 2023)



Yokohama Municipal Transportation Network

