

Let's Learn



にほんご



Izumi Ward Office

あいうえお

Japanese Language Class



SEPTEMBER 7th 2023 ~ FEBRUARY 8th 2024

Every Thursday morning (10:00 - 12:00)

(*Close Days...November 23, December 28, January 4)



Free
¥0

LOCATION : IZUMI Ward Office.

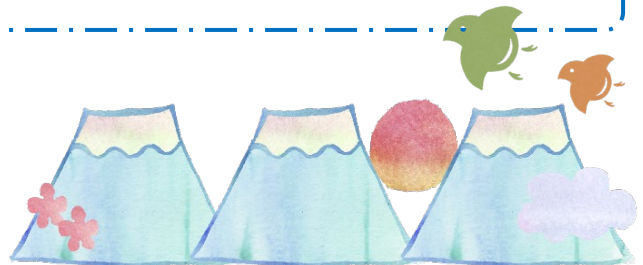
WHO CAN APPLY : Foreign residents of Izumi Ward 15 Years old and over , who are beginners to learn very basic Japanese.

CLASS SIZE : Maximum of 12 ◆ Please note that some students may not be accepted if Japanese level stays intermediate or advanced.

HOW TO APPLY : Please make a phone call, fax, email, or come directly to the counter. Registration starts from **August 14th** (Apply by calls are available in Japanese)

ATTENTION : At the first Japanese class, on **September 7th**, there will be Japanese Proficiency Level Check.

Please feel free to contact us!



A multi-language supports
Chinese (Thursday), Vietnamese (Friday)
English (Mon, Tue, Thur)

 To the next page



案内
INFORMATION



CONTACT

IZUMI WARD OFFICE

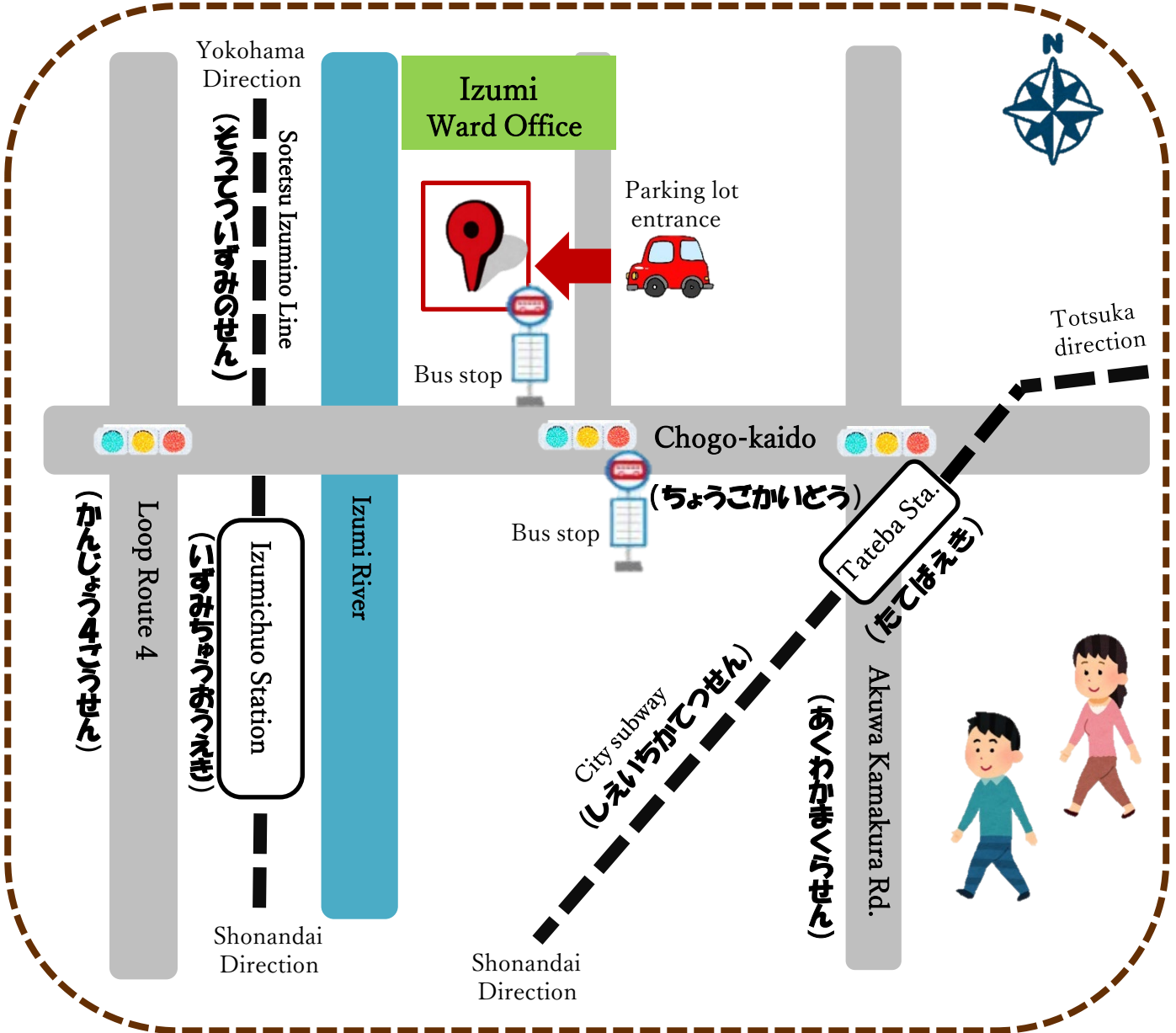
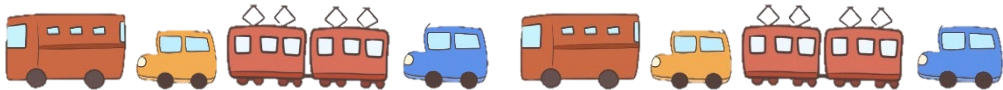


JAPANESE LANGUAGE CLASS

Regional Development Division (Counter #309), IZUMI Ward Office

Email: iz-tabunka@city.yokohama.jp

TEL: 045-800-2392 FAX: 045-800-2507





Calendar

September

Sun	Mon	Tue	Wed	Thu	Fri	Sat
					1	2
3	4	5	6	7	8	9
10	11	12	13	14	15	16
17	18	19	20	21	22	23
24	25	26	27	28	29	30

October

Sun	Mon	Tue	Wed	Thu	Fri	Sat
1	2	3	4	5	6	7
8	9	10	11	12	13	14
15	16	17	18	19	20	21
22	23	24	25	26	27	28
29	30	31				

November

Sun	Mon	Tue	Wed	Thu	Fri	Sat
			1	2	3	4
5	6	7	8	9	10	11
12	13	14	15	16	17	18
19	20	21	22	23	24	25
26	27	28	29	30		

December

Sun	Mon	Tue	Wed	Thu	Fri	Sat
					1	2
3	4	5	6	7	8	9
10	11	12	13	14	15	16
17	18	19	20	21	22	23
24	25	26	27	28	29	30
31						

January

Sun	Mon	Tue	Wed	Thu	Fri	Sat
	1	2	3	4	5	6
7	8	9	10	11	12	13
14	15	16	17	18	19	20
21	22	23	24	25	26	27
28	29	30	31			

February

日	月	火	水	木	金	土
				1	2	3
4	5	6	7	8	9	10
11	12	13	14	15	16	17
18	19	20	21	22	23	24
25	26	27	28	29		



IZUMI WARD OFFICE
JAPANESE LANGUAGE CLASS

APPLICATION FORM



NAME			
ADDRESS	〒 -		
TEL		FAX	
E-Mail		NATIONALITY	



1 AGE 2 SEX
 YEARS OLD MALE FEMALE

3 SINCE WHEN HAVE YOU BEEN IN JAPAN?
 (DATE/MONTH/YEAR) / /

4 WHAT LANGUAGE DO YOU SPEAK? _____

5 HOW WOULD YOU DESCRIBE YOUR JAPANESE PROFICIENCY?
 I don't understand at all.
 I understand a little, like greetings.
 I understand some Japanese.

6 ARE YOU ABLE TO READ HIRAGANA CHARACTERS?
 I am not able to read HIRAGANA characters at all.
 I am able to read some HIRAGANA characters.
 I am mostly able to read HIRAGANA characters.

7 HOW DID YOU GET TO KNOW THIS JAPANESE LANGUAGE CLASS?
 Koho Yokohama
 The Town News
 Internet
 Personal communication
 Others ()

