

**Prospective IR Operator Selection Criteria for
the Project to Establish and Operate Yokohama
Specified Complex Tourism Facilities**

January 2021

City of Yokohama

Table of contents

- Section 1 Position of the Prospective IR Operator Selection Criteria 1**

- Section 2 Method of selecting the Prospective IR Operator 1**
 - 1 Overview of the selection method 1
 - 2 The selection framework 1

- Section 3 The Prospective IR Operator selection process 2**

- Section 4 Examination process and methods 3**
 - 1 Qualification screening 3
 - 2 Examination of the proposal 3
 - 3 Examination criteria for the examination of the details of the proposal 3
 - 4 Selection of the best proposer 4
 - 5 Selection of the Prospective IR Operator 4
 - 6 Notification and announcement of the examination results 4

- Table 1 Examination items for the examination of the details of the proposal 5**

Section 1 Position of the Prospective IR Operator Selection Criteria

The Prospective IR Operator Selection Criteria for the Project to Establish and Operate Yokohama Specified Complex Tourism Facilities (hereinafter, the “Selection Criteria”) indicate the method, procedure and examination items that the City of Yokohama (hereinafter, the “City”) implements in selecting a private-sector operator that is expected to undertake the project to establish and operate Yokohama Specified Complex Tourism Facilities (hereinafter, the “Project”). The Criteria comprises an integral part of the Guidance.

The definitions of the terms used in the Selection Criteria are same as those provided in the Guidance.

Section 2 Method of selecting the Prospective IR Operator

1 Overview of the selection method

The City extends a public invitation to private-sector business operators who wish to participate in the Project in accordance with the Guidance and will select the Prospective IR Operator while ensuring the transparency and fairness of the selection process.

The Selection Criteria set forth examination perspectives and scores which are applied to each examination item on the assumption that the applicant fulfills the Participation Requirements and Project Requirements stipulated in the Guidance etc.

The selection of the Prospective IR Operator will take place in two steps: (1) qualification screening where the City examines whether the Applicant fulfills the participation qualification requirements that the City indicates in the Guidance; and (2) the examination of the proposal where the specific proposal etc. will be examined and a Prospective IR Operator will be selected.

The examination of the proposal is further divided into two sections: a basic examination, which confirms the fulfillment of the Project Requirements, and an examination of the details of the proposal, which examines the details of the proposal.

2 The selection framework

The City on March 3, 2020, established the Yokohama City IR Operator Selection Advisory Committee (hereinafter, the “Selection Advisory Committee”) to ensure objective and fair examinations and to refer to professional opinions in selecting the Prospective IR Operator.

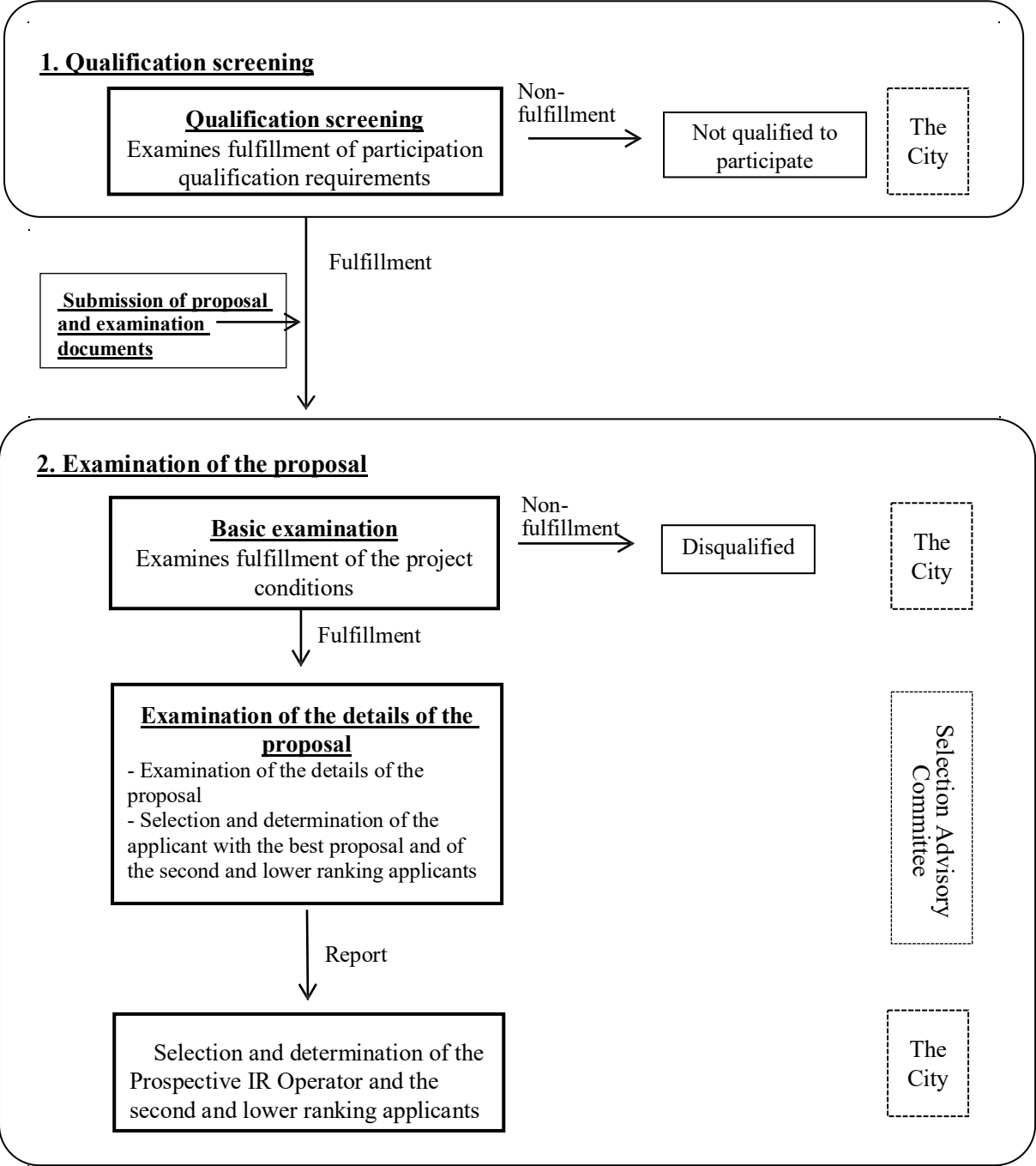
The Selection Advisory Committee consists of the following seven members.

- Chairperson Eisuke Sakakibara, President, Institute for Indian Economic Studies
 - Member Toshiharu Ikaga, Professor, Faculty of Science and Technology, Keio University
 - Member Masaki Ukawa, Professor, Faculty of Business Administration, Musashino University
 - Member Taisuke Kanayama, Professor, Department of Risk Management, Nihon University
 - Member Norihiro Nakai, Dean, School of Environment and Society,
Tokyo Institute of Technology
 - Member Yoshio Hirayasu, General Director, Heian Hospital
 - Member Hideki Furuya, Professor, Faculty of International Tourism Management,
Toyo University
- (Honorifics omitted; in the order of Japanese syllabary, except the chairperson)

The City will select and determine the Prospective IR Operator based on examinations to be undertaken by the Selection Advisory Committee.

Section 3 The Prospective IR Operator selection process

The process of selecting the Prospective IR Operator is as follows. This illustrates the process from the commencement of the examination to the selection and determination of the Prospective IR Operator that is described in Section 4. The “City” and the “Selection Advisory Committee” in the right-side field indicate the parties implementing the procedure.



Section 4 Examination process and methods

Examination process and methods are as follows.

1 Qualification screening

The City examines, based on the qualification examination documents, whether the applicant fulfills the participation qualification requirements indicated in the Guidance. The qualification screening is conducted prior to the examination of the proposal. An applicant who does not fulfill the participation qualification requirements will not proceed to the examination of the proposal.

2 Examination of the proposal

The City examines the Proposal Examination Documents to be submitted by entities that pass the Qualification Screening and participate in the examination of the proposal (hereinafter, the "Proposal Examination Participants"), following the process described below.

The examination of the proposal consists of two steps: a basic examination and an examination of the details of the proposal

The City undertakes the basic examination, examining whether the contents of the Proposal Examination Documents fulfill the Requirements stipulated in the Guidance etc.

Regarding the Proposal Examination Documents whose fulfillment of the Project Requirements has been confirmed through the basic examination, the Selection Advisory Committee examines the details of the proposal by confirming the details of the proposal through a document examination and a presentation (including questions and answers) in accordance with the Selection Criteria.

The examination of the details of the proposal examines the quality, concreteness, appropriateness, and feasibility of the proposal.

3 Examination criteria for the examination of the details of the proposal

(1) Examination items

Examination items and examination perspectives are described in Table 1 "Examination Items for the Examination of the Details of the Proposal."

(2) Score calculation method

The scoring method for the examination items is described in Table 1 "Examination Items for the Examination of the Details of the Proposal."

When the Selection Advisory Committee examines the details of the proposal, it will score them by examination item (middle classification), taking into consideration the examination perspectives.

The evaluation method is an absolute evaluation based a five-grade scale, from A to E. The criteria for each evaluation grade and the scoring method are as follows.

Evaluation grades	Criteria	Scoring method
A	Outstanding	Points x 1.00
B	Very good	Points x 0.75
C	Good	Points x 0.50
D	Ingenious	Points x 0.25
E	No particular merits	Points x 0.00

A proposal that, as a result of the examination of the details of the proposal, does not achieve 50% of the full score in any of the examination item (large classification) will be disqualified.

4 Selection of the best proposer

The Selection Advisory Committee nominates the Proposal Examination Participant who scores the highest as the best proposer. It determines the second and lower ranking participants according to their scores.

5 Selection of the Prospective IR Operator

The City will select and determine the rank order of the Proposal Examination Participants and select a Prospective IR Operator based on the Selection Advisory Committee's report. In determining the Prospective IR Operator, the City will consult with Yokohama Innovative IR Council.

6 Notification and announcement of the examination results

The City will notify the Proposal Examination Participants of the results of the proposal examination and, promptly after determining the Prospective IR Operator, publish the following information items and materials concerning the results of the examination and the process of evaluation (except any information items and materials that could infringe the rights, competitive positions, and other legitimate interest of the relevant private-sector business operators and/or that could hinder adequate implementation of the project) on its website or by other appropriate means. No question about the examination is accepted.

- (1) Name and scores of the Prospective IR Operator (score of each examination item (middle classification) and total score)
- (2) Names and scores of the participants in the examination of the proposal (score of each examination item (middle classification) and total score)
- (3) Reasons for the selection of the Prospective IR Operator
- (4) Summary of the minutes of the meetings of the Selection Advisory Committee and its comments

Table 1 Examination items for the examination of the details of the proposal

Large classification items	Middle classification items	Examination perspectives	Score allocation
1 Realization of Yokohama Innovative IR to make Yokohama a selected destination in the world	1 Concept and overall plan for realizing Yokohama Innovative IR	<ul style="list-style-type: none"> (i) Does the proposal demonstrate a clear and unique concept based on the basic concept of Yokohama IR that will innovate Yokohama's tourism and economy and create maximum synergy effects by developing an IR that meets the world's highest standards, integrating the attractiveness of Yokohama's metropolitan coastal area? (ii) Does the proposal demonstrate superb strategy for creating a very high level of global competitiveness of Yokohama that would make Yokohama a selected destination in the world and a gateway to Japan in the view of ensuring further growth of Yokohama as an attractive city and enriched livelihood of the residents of Yokohama? (iii) Does the proposal demonstrate superb vision and strategy that meet the diverse needs of society, create a model example for the world, and increase Yokohama's presence by providing the world's most advanced facilities, functions, and services that would help attain SDGs? (iv) Does the proposal demonstrate a clear policy and plan of the project as a whole, consistency among the details of the proposal, elaboration, and a high level of completeness? 	6
	Sub-total		
2 Realization of an IR that meets the world's highest standards	1 Making Yokohama Asia's leading MICE-oriented city	<ul style="list-style-type: none"> (i) Does the proposal contain concrete and superb concept and strategy that contributes to making Yokohama Asia's leading MICE-oriented city as a member of the system to promote tourism and MICE by fully mobilizing Yokohama's resources? (ii) Does the proposal present facilities and services (including those utilizing cutting-edge technologies) with a high level of global competitiveness in terms of scale and quality that will be able to meet the needs for sophisticated MICE facilities and services acceptable by global standards and to accommodate inter-governmental conferences, large-scale international conventions, and exhibitions, etc.? (iii) Does the proposal demonstrate superb ingenuity to realize good usability of the facilities, including their flexibility in accommodating a wide variety of events of various sizes and enabling the different parts of the facilities--such as the conference hall, entrance hall, foyer, and outdoor area--to be used in an integral manner? (iv) Does the proposal present a functional and superb layout plan that increases the synergy effects between the international conference facilities and the exhibition and other facilities based on the needs of MICE users and operational plans? (v) Does the proposal demonstrate concrete and feasible approaches to attracting and hosting new types of international conferences, exhibitions etc. that lead to visits of an unprecedented scale by foreign customers for business purposes? Does it also indicate specific conferences, exhibitions etc. that the proposer would like to attract? (vi) Does the proposal present concrete and feasible ideas about business events (such as unique venues) to be held in outdoor spaces or in facilities that would draw on the attractive landscape of the port? (vii) Does the proposal present, in a concrete manner, ideas about the cooperation with the City, Pacifico Yokohama, YCVB, etc. and the division of roles among them, and anticipated effects, including an increase in the number of conferences to be hosted, demonstrating superb approaches to making Yokohama Asia's leading MICE-oriented city? (viii) Does the proposal demonstrate, in a concrete manner and based on past performance, that the presenter is equipped with an organizational system and knowhow necessary for promotion, planning, and operation? 	8
	2 Establishment of facilities that enhance attractions that help rediscover the attractiveness of Japan's superb tradition, culture, arts, etc. and communicate them to the world	<ul style="list-style-type: none"> (i) Does the proposal present concrete and superb concept and strategy for establishing a tourism center that helps rediscover the attractiveness of Japan's superb tradition, culture, etc. and communicate them to the world with entertaining methods that meet the world's highest standards? (ii) Does the proposal present, in a concrete manner, attractive contents that would attract tourists from throughout the world, as well as a wide variety of methods of communication of unprecedented quality? (iii) Does the proposal demonstrate ingenuity that would help not only visitors from outside Japan but also Japanese rediscover Japan's attractiveness? (iv) Does the proposal demonstrate, in a concrete manner and based on past performance, that the presenter is equipped with an organizational system and knowhow necessary for planning and operating facilities, sourcing, and developing contents, etc.? 	4
	3 Establishment of customer transfer facilities that would help develop new golden tourist routes with Yokohama as their starting point	<ul style="list-style-type: none"> (i) Does the proposal present concrete and superb concept and strategy for developing a gateway and new golden tourist routes to transfer visitors from Yokohama to tourist destinations in various regions of Japan? (ii) Does the proposal present concrete and feasible showcasing functions that communicate the attractions of and information about tourism in various regions with realistic sensations generated with cutting-edge technologies etc. in a way that meets users' needs? (iii) Does the proposal present a menu of attractive experiences, such as tours to experience and explore attractions of various regions, as well as concrete and superb ideas about the concierge function that would coordinate necessary services on a one-stop basis? (iv) Does the proposal demonstrate superb ingenuity for transferring visitors comfortably and smoothly, including the anticipation of sufficient scale, etc. for accommodating the presumably increasing number of visitors? 	4

Large classification items	Middle classification items	Examination perspectives	Score allocation
		(v) Does the proposal present, in a concrete manner, approaches, division of roles, effects, etc. in relation to cooperation with various local governments, tourism-related organizations, private-sector business operators, etc. in collecting, introducing, and communicating tourism information and planning tours etc.? (vi) Does the proposal demonstrate, in a concrete manner and based on past performance, that the presenter is equipped with an organizational system (including the capability of providing multi-language services) and knowhow necessary for planning and operating facilities?	
	4 Establishment of a range of accommodation facilities including world-class luxury hotels that meet all needs	(i) Does the proposal present concrete and superb concept and strategy towards prolonging the length of stays and realizing stay-type tourism with a high level of global competitiveness? (ii) Does the proposal demonstrate a high level of global competitiveness in terms of brands, scales, and facilities of accommodations, as well as the variety and quality of food, drink, and ancillary services etc.? (iii) Does the proposal present feasible and superb ideas with good ingenuity for creating an environment for visitors' stay, drawing on the unique location of Yokohama and Japan's unique attractiveness, such as the four seasons and the spirit of hospitality? (iv) Does the proposal demonstrate, in a concrete manner and based on past performance, that the presenter is equipped with an organizational system and knowhow necessary for planning and operating facilities?	4
	5 Establishment of facilities etc. with global competitiveness and high quality that encourage a wide range of people to visit and stay enjoyably	(i) Does the proposal present concrete and superb concept and strategy that increase the overall attractiveness of Yokohama IR by establishing entertainment facilities that meet the world's highest standards and attract many tourists from throughout the world and encourage them to stay for a long period of time? (ii) Does the proposal present feasible and superb plans describing specific contents and services with global competitiveness and high quality that a wide range of people can enjoy? (iii) Does the proposal present feasible and superb plans with ingenuity that meet a variety of needs of tourists from throughout the world, such as wellness tourism and satisfying night-life activities? (iv) Does the proposal present attractive and superb plans for attractions in the waterside areas that proactively drawn on water areas and encourage people to gather and interact by hosting activities on the water, performances utilizing the waterside spaces, events, etc.? (v) Does the proposal present attractive and superb ideas for creating liveliness in the open spaces, including those in the surrounding areas, drawing on the landscape of the port and greenery? (vi) Does the proposal demonstrate, in a concrete manner and based on past performance, that the presenter is equipped with an organizational system and knowhow necessary for planning and operating facilities, sourcing, and developing contents, etc.?	4
	6 Establishment of traffic environment and traffic networks in and outside the IR Area that help attract and transfer customers	(i) Does the proposal present feasible and superb ideas to enhance the function of attracting customers and transferring customers to various regions of Japan, as well as to help increase visitors to the surrounding areas? (ii) Does the proposal present feasible and superb plans for developing traffic networks to connect the IR Area to various cities in Japan and to airports, etc., including a range of traffic means such as buses and ships? (iii) Does the proposal present concrete and superb plans with diverse approaches that would help reduce traffic congestions in the surrounding areas and facilitate visits to the surrounding areas? (iv) Does the proposal present attractive and superb plans concerning pedestrian promenades that visitors can enjoy, with safety and security ensured? (v) Does the proposal present attractive and superb traffic plans that make mobility itself an attraction?	3
	Sub-total		27

Large classification items	Middle classification items	Examination perspectives	Score allocation
3 Town development towards establishing Yokohama IR that meets the world's highest standards and integrating it with Yokohama's metropolitan coastal area	1 Yokohama's new urban design and landscape development, facility planning, and space forming that symbolize the 21st century	<ul style="list-style-type: none"> (i) Do the proposed designs of the buildings within the IR Area embody the overall concept of the IR Area? (ii) Does the proposal present attractive ideas from the following four perspectives, (1) to (4), based on "Yokohama IR Landscape Design Note: Creative Landscape Development That the City of Yokohama Envisions"? <ul style="list-style-type: none"> (1) Contribute to making Yokohama a city that has both functionality and universal beauty, sustains its value over a long period of time, is loved by people for many years and visited repeatedly. (2) As part of the inner harbor area, create a new page of Yokohama's town development, blending into the overall landscape of the area and highlighting and increasing the attractiveness of the contrast between Yamashita Pier and the conventional townscape. (3) The landscape to be developed with the IR Facilities should present a variety of stories and create a landscape experience unique to Yamashita Pier. (4) Realize a future urban design that makes Yokohama attractive to the world, such as demonstrating attractive environment friendliness and creativity accumulated in Yokohama. (iii) Does the proposal present superb plans concerning the facilities in the IR Area, planning appropriate locations and volumes of them, organically linking them to each other, integrating them in an integral space, so that synergy effects are expected to be created? (iv) Does the proposal present superb plans for setting up attractive spaces, organically connecting an attractive entrance space suitable for a resort, open spaces for creating liveliness, comfortable promenades etc. to each other? (v) Does the proposal present attractive and superb plans for establishing comfortable spaces by forming a green axis in the metropolitan coastal area and securing its unity and continuity with Yamashita Park and the surrounding greenery areas? 	7
	2 Realizing a "Showcase of a Future City" by fully utilizing cutting-edge technologies (a smart city with sustainable and inclusive town development)	<ul style="list-style-type: none"> (i) Does the proposal present concrete and superb plans for realizing a smart city that is unparalleled in the world and leads to the creation of new industries by proactively incorporating cutting-edge technologies utilizing AI, etc.? (ii) Does the proposal present concrete and superb plans regarding targets and initiatives for the IR Area's total energy optimization, energy saving, generation of renewable energy, etc. towards decarbonization? (iii) Does the proposal present specific and feasible initiatives for sustainable town development, making harmonious coexistence with the environment from the perspective of reducing environmental burdens? (iv) Does the proposal present concrete and feasible plans for developing an inclusive town with a high level of hospitality where anybody can spend time safely and comfortably with a sense of security, such as realizing universal design and fostering a barrier-free mindset? 	6
	3 Establishment of a resilient and agile town with preparedness for natural disasters, infectious diseases, etc. (Crisis management and disaster prevention measures)	<ul style="list-style-type: none"> (i) Does the proposal present superb plans for establishing a town that is autonomously resilient to natural disasters and agile, ensuring that the town is equipped with sophisticated disaster prevention functions against earthquakes, tsunami, high tide water, etc., secures the safety of the visitors and employees, and serves as a safe and secure disaster prevention center for local residents? (ii) Does the proposal present concrete and feasible plans for stable and autonomous energy supply to ensure business continuity even in the event of a large-scale natural disaster? (iii) Does the proposal present feasible and superb plans for ensuring readiness to appropriately and effectively respond to contingency, including effective initiatives, systems, and business plans to respond to natural disasters? (iv) Does the proposal present effective and feasible initiatives for helping further strengthen the City's disaster prevention capabilities in terms of securing the safety of visitors, employees, and local residents in the event of contingency and serving as a center for receiving disaster volunteers and receiving and relaying emergency supplies? (v) Does the proposal present concrete and effective countermeasures against the novel coronavirus, new strains of influenza, and other infectious diseases, as well as measures for securing health and sanitation? 	5
Sub-total			18
4 Tourism and economic innovation with full mobilization of Yokohama's resources (Economic and social effects)	1 Cooperation with and contributions to local communities (Cooperation with the City etc. utilizing profits from casino business and other businesses)	<ul style="list-style-type: none"> (i) Does the proposal present concrete and effective plans for revitalizing Yokohama's tourism and economy, including locations of facilities and joint events that increase the attractiveness of the towns in Yokohama's metropolitan coastal area and encourage visitors to visit and travel to the surrounding areas? (ii) Does the proposal present concrete and effective plans, including a system, for sourcing goods and services from local small and medium-sized enterprises in the city to revitalize the local economy? (iii) Does the proposal present concrete and superb plans for creating quality employment, including enhancing employment and work environment, fostering the development of global talent for tourism businesses, and utilizing them in the city? (iv) Does the proposal present concrete and superb plans for revitalizing MICE businesses in Yokohama as a leader of MICE businesses? 	7

Large classification items	Middle classification items	Examination perspectives	Score allocation
		<ul style="list-style-type: none"> (v) Does the proposal present concrete and effective plans for creating legacy effects of MICE, including creating open innovation opportunities, expanding business opportunities drawing on Yokohama's unique industries, and creating new industries? (vi) Does the proposal present concrete and effective plans for cooperation with the City etc. in implementing initiatives towards realizing stay-type tourism with a high level of global competitiveness, including attracting MICEs, establishing inter-regional tourism routes, and promoting inbound tourism? (vii) Does the proposal present concrete and superb initiatives for providing opportunities for community activities and raising awareness among local residents? (viii) Does the proposal present concrete and superb plans for cooperation with the City etc., in implementing comprehensive and systematic countermeasures against gambling and other addictions, drawing on the applicant's knowledge and experiences? (ix) Does the proposal present concrete and superb plans for cooperation with the City, etc. in implementing initiatives for strengthening crime prevention to prevent crimes and maintain good culture and a clean entertainment environment? (x) Does the proposal present concrete and effective plans for cooperation in initiatives for comprehensively promoting the healthy development of youth and children, including awareness-raising activities? (xi) Does the proposal present plans for adequately utilizing profits from the casino and other businesses for the sake of cooperation with the City in implementing its initiatives (for contributions to the local communities)? 	
	2 Improvement of the IR Facilities and businesses utilizing profits from the casino and other businesses (Reinvestment)	<ul style="list-style-type: none"> (i) Does the proposal present concrete and effective policy and plans concerning reinvestment such as considering the future expansion of exhibition and other facilities in the MICE facilities? (ii) Does the proposal present concrete and effective policy and plans concerning reinvestment, including enhancing existing contents, developing new contents, and reviewing methods by incorporating cutting-edge technologies for the purpose of sustaining the attraction enhancement facilities' ability to pull in customers? (iii) Does the proposal present concrete and effective policy and plans concerning reinvestment, including enhancing existing contents, developing new contents, and reviewing methods by incorporating cutting-edge technologies for the purpose of sustaining the customer transfer facilities' ability to pull in customers? (iv) Does the proposal present concrete and effective policy and plans concerning reinvestment for maintaining and further improving the accommodation facilities' quality spaces and services to always impress visitors? (v) Does the proposal present concrete and effective policy concerning reinvestment, including enhancing existing contents, developing new contents, and reviewing methods by incorporating cutting-edge technologies for the purpose of sustaining the accommodation facilities' ability to pull in customers? (vi) Does the proposal present plans for adequately using profits from the casino and other businesses for maintaining IR facilities and improving other IR businesses (reinvestment), including constantly creating attractive facilities and contents that attract tourists from throughout the world over a long period of time after the opening of the IR? 	3
	3 Effects on tourism and local economy	<ul style="list-style-type: none"> (i) Can a large number of MICEs be expected to be held with a large number of people participating? (ii) Can a large number of people be expected to visit the IR Area? In particular, does the proposed plan contribute to the government's tourism strategy that seeks to achieve the goal of 60 million foreign visitors to Japan by 2030? (iii) Can a large amount of travel consumption be expected to be generated with people visiting the IR Area, as well as other areas triggered by their visits to the IR Area? In particular, does the proposed plan contribute to the government's tourism strategy that seeks to achieve the goal of 15 trillion yen in travel expenses being incurred by foreigners visiting Japan by 2030? (iv) Can a large number of job creation be expected by the IR businesses? (v) Is a large amount of initial investment expected to be made before the opening of the IR? (vi) In regards to (i) to (v), does the proposal present persuasive approaches and data-based accurate calculations and concretely describe the calculation methods? 	5
	Sub-total		15
5 Development of Yokohama's security and safety model	1 Policy concerning initiatives from the perspective of responsible gaming	<ul style="list-style-type: none"> (i) In regards to policy and initiatives for eliminating harmful effects associated with the establishment and operation of the casino facilities, including countermeasures against gambling and other addictions from the perspective of responsible gaming and against a decline in security conditions, does the proposal present concrete and effective plans for ensuring the implementation of them based on IR-related laws and ordinances, including establishing tight internal control and fully drawing on the applicant's own ingenuity and knowhow? 	2

Large classification items	Middle classification items	Examination perspectives	Score allocation
	2 Countermeasures against gambling and other addictions and harmful effects on the youth (Measures against addictions)	(i) Does the proposal present balanced and appropriate layout plans, designs, etc. with the casino facilities physically separated from the main routes used by visitors under the age of 20 and families, etc. and blending in with the overall concept of the IR Area? (ii) Does the proposal present a plan for making the casino facilities an elegant and clean space appropriate for adults' social interaction, including setting a dress code? (iii) Does the proposal present concrete and effective initiatives for restricting customer solicitation, including thorough restriction of advertising and solicitation in the IR Area and notification of risks to users? (iv) Does the proposal present concrete and effective initiatives for strictly restricting admission, including thorough identification of customers, entry and exit control, restriction of frequency of entry, and self and family exclusion? (v) Does the proposal present concrete and effective initiatives for implementing restrictions in the casino facilities, including prevention of acts stimulating passion for gambling, provision of right information, and restriction on installation of ATMs? (vi) Does the proposal present concrete and effective initiatives for providing consultation and treatment, including setting up a consultation desk and having trained staff address customers? (vii) Does the proposal present concrete and effective initiatives for effectively ensuring responsible gaming, including thoroughly educating employees and establishing an internal control system? (viii) Does the proposal present concrete and effective initiatives for preventing harmful effects on youth and children, including strict admission control and thorough restriction of advertising and solicitation?	6
	3 Prevention of crimes, maintenance of good culture and a clean entertainment environment, and countermeasures against harmful effects on youth and children (protection, development, etc.)	(i) Does the proposal present concrete and effective initiatives for establishing a crime prevention environment and crime and fraud prevention measures utilizing cutting-edge technologies etc.? (ii) Does the proposal present concrete and effective initiatives for security measures, including the establishment of a security system and incorporation of security systems utilizing cutting-edge information and communication technologies? (iii) Does the proposal present concrete and effective initiatives for preventing harmful effects on youth and children, including patrols in the relevant area, and protection and development of youth and children?	5
	4 Countermeasures against involvement of anti-social forces and money laundering	(i) Does the proposal present concrete and effective initiatives for excluding anti-social forces, including banning admission, cooperating with the Prefecture Police, and developing a database? (ii) Does the proposal present concrete and effective initiatives for preventing money laundering, including checking transaction records, grasping customer information and transaction statuses, developing an internal control system, and educating employees?	4
	Sub-total		17
6 Ability of and structure for stably and continuously operating the IR Business	1 Ability of and structure for implementing the Project with certainty	(i) Does the IR Operator and its constituent members have the ability to implement the Project with certainty? (ii) Does the proposal clearly demonstrate sound governance and speedy decision-making, including clearly describing the decision-making process, that can address any conflict of interest between stakeholders, as well as contingencies? (iii) Does the proposal present concrete and effective plans for fully drawing on experiences and knowhow gained by the constituent members and cooperating companies with the division of roles and responsibilities between them clarified? (iv) Does the proposal present concrete and effective ideas about the system for undertaking the operations, collaboration and cooperation between constituent members and cooperating companies, etc.? (v) Does the proposal present appropriate and sufficient measures necessary for ensuring overall compliance, including robust organization and systems? (vi) Does the proposal present concrete and effective measures for excluding anti-social forces at every stage? (vii) Does the proposal present concrete and effective approaches to self-monitoring, including methods, frequency, and systems? (viii) Does the proposal demonstrate that necessary and sufficient personnel with adequate experiences and knowhow is secured? (ix) Does the proposal present concrete and superb approaches to enhancing employment and work environment and securing and developing global and sophisticated talent for tourism, while creating opportunities for a wide range of employees to make active contributions?	7
	2 Financial soundness and certainty of funding	(i) Does every constituent member have sufficient assets and financial soundness to undertake the Project, which entails large-scale capital contribution? (ii) Does the proposal present a rational funding plan with certainty secured in regards to every constituent member's capital contribution?	4

Large classification items	Middle classification items	Examination perspectives	Score allocation
		(iii) Does the proposal demonstrate that the SPC's funding plan is consistent with the project plan and rational with certainty secured and that sufficient cooperation and coordination have been made with the financial institutions that are anticipated to provide loans?	
	3 Stable and sustainable revenue and expenditure plan	(i) Does the proposal demonstrate that the details of the revenue and expenditure plan show consistency with other items in the proposal, and are prepared based on appropriate grounds and analysis, and are rational and feasible? (ii) Does the proposal present plans for securing stable and continual operation over a long period of time, including appropriate response measures for actualization of risks (such as a decline in financial performance) and reflecting such risks?	4
	4 Marketing and promotion strategy for realizing Yokohama IR	(i) Does the proposal present a marketing strategy for realizing a globally competitive IR based on persuasive methods and data analysis? (ii) Does the proposal present appropriate and effective promotion strategy to contributing to increasing visits from overseas to Japan and from other parts of Japan to Yokohama and raising the profile of Yokohama? (iii) Does the proposal present concrete and effective ideas about the sales structure equipped with a sales network for implementing such strategy and for robustly implementing the Project?	2
	Sub-total		17
	Total		100