

Welcome to Midori Library



Hours

*Tuesday ~ Friday 9:30a.m. ~ 7:00p.m.

*Saturdays, Sundays, Mondays, Holidays,
and December 28

9:30a.m. ~ 5:00p.m.

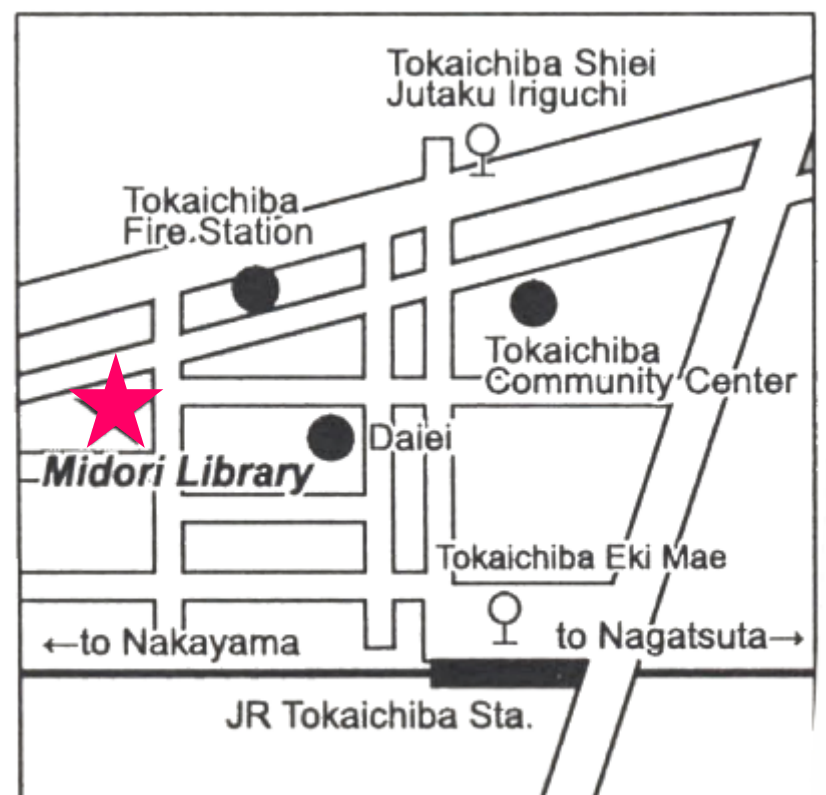
*January 4

12:00p.m. ~ 5:00p.m.

Closed Days

Scheduled closing day for facility
maintenance (once a month)

December 29 ~ January 3 and for inventory



A library card is needed to borrow books.

With the library card,
you can borrow books
from any Yokohama City
Libraries.

The library card is free
to anyone who lives,
works, or attends school
in Yokohama city.



You may borrow up
to a total of **6**
items(magazines
and books) from all
branches for **2**
weeks.

Entrance



Hello!!



If the item you would like to borrow is not on the shelf or the items are located at other Yokohama City Libraries, you can place a request.

Counter

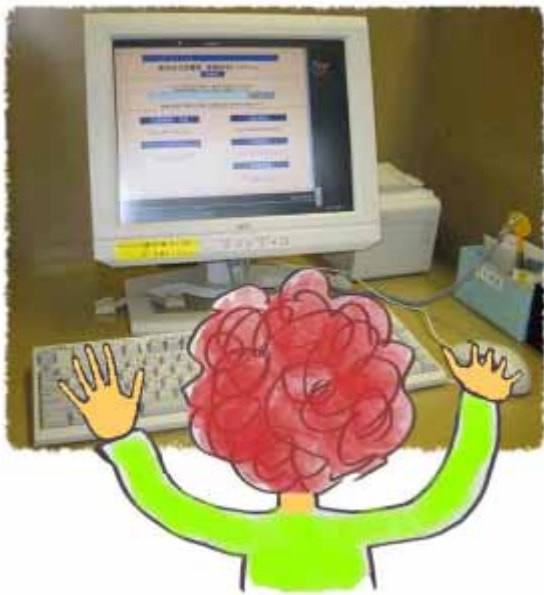
Reserving
Borrowing

Returning



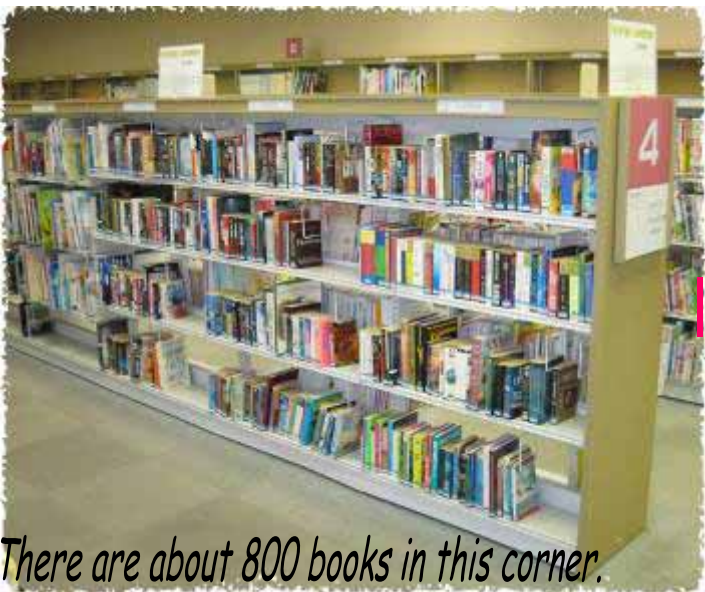
Registration
Reference

Library Computer



You can search items by accessing to the library search engine covers all Yokohama City libraries from library computer or web page.

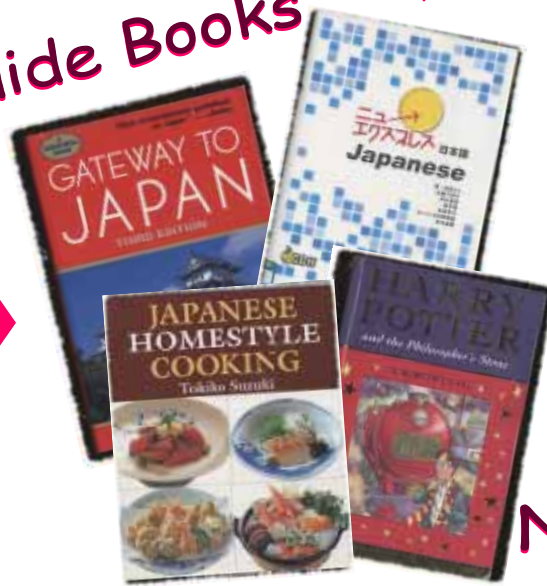
Foreign Language Corner



There are about 800 books in this corner.

Guide Books

Japanese Language Books



Cooking Books



Picture Books

Novels and more...

Picture Books Corner



If you can't understand Japanese, you'll enjoy picture books.

Magazine & News paper



"Newsweek" and "The Japan Times".